

# Buckingham Cattlemen's Association Weaned Feeder Calf Sale

Virginia Quality Assured Purple Tag Certified

**\*\*PICK UP LOCATION\*\***

**Buckingham Agricultural Resource Network (BARN)**

**11851 W. James Anderson Hwy, Buckingham, VA**

**Access Route 60 just west of Buckingham Courthouse via Route 24, 56, 20, and 15**

Videos of Sale Cattle by Producer available at [www.buckinghamcattlemensassociation.com](http://www.buckinghamcattlemensassociation.com)

**Home bred and raised calves, intensive genetic program for Docility and Growth**

**Tel-O-Auction, 6:00 PM**

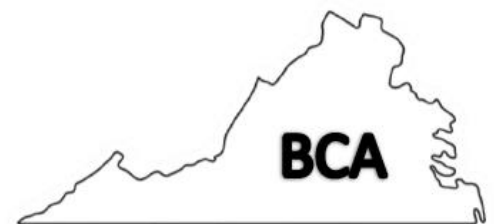
**August 5, 2024**

Obtain a bidder number and information from the Virginia Cattlemen's Association at (540) 992-1009

Tel-O-Auction number: 1(800) 309-2350 \* Code: 4505513#



Videos of Producer Cattle  
can be found here!



# Birthdates provided, September 1 through December 31, 2023

September and early October calves AI sired by:



Sire	Yearling wt	Docity	Carcass weight	Marbling	Ribeye area	fat
Tahoe	+135	+24	+48	+.91	+.78	+.006
Playbook	+104	+26	+45	+.47	+.33	+.045
Impact's Fortune	+113	+14	+19	+.08	+.65	-0.08

## GRADING INFORMATION

### Feeder Cattle

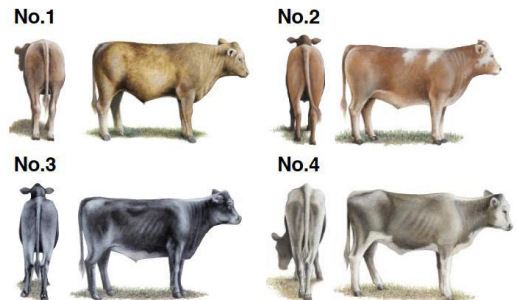
Official U.S. Grades

#### Frame Size



Large and medium frame pictures depict minimum grade requirements. The small frame picture represents an animal typical of the grade.

#### Thickness



No. 1, No. 2 and No. 3 thickness pictures depict minimum grade requirements. The No. 4 picture represents an animal typical of the grade.

Copies of the Official United States Standards for Feeder Cattle are available upon request



Large framed cattle are those that are expected to weigh over 1250lbs. when their external fat is approximately 0.5 inches at the 12th rib where beef carcasses are “ribbed” for grading purposes. The 0.5-inch target is used in the USDA standards as a reasonable live animal predictor for a calf’s ability to grade choice or higher.

GRADE	STEER (LBS)	HEIFER (LBS)
LARGE (L)	1250 OR greater	1150 or greater
MEDIUM (M)	1100 TO 1249	1000 TO 1149

**Stag Guarantee:** Any steer found to be a stag within 90 days of the delivery date, buyer will be refunded \$250

**Heifer Guarantee:** If a Buyer purchases a heifer that happens to be bred, the producer agrees to refund \$300 to the purchaser. This is subject to a veterinarian's certification that the heifer is pregnant and the returned ear tag verifying the identification and farm of origin.

\*Weight estimated for Aug. 7-9. Loads held longer, buyer will be responsible for additional weight.

### Health Program:

All calves Double Vaccinated with Boehringer Ingelheim health products:

Pyramid 5 + Prespense (Modified Live) for IBR, PI3, BVD

Caliber 7 or Calvary 9 (Clostridial) and Dewormed

\*No ACTIVE pink eye will be shipped, some small spots may be present on previously treated animals\*

All Producers are BQA Certified

Contact: Jennifer Ligon (434) 607-5814 or Roger Morris (434) 315-4294

VDACS Grader: Scott Talley (540) 290-1311

## STEERS

<b>Lot 1</b>	<b>86 head Steers</b>	<b>Total Weight</b>	<b>48,000-50,000</b>
	2 L1, 52 M1, 30 L&M2 78 Black, 5 BWF, 1 black-nose CX Average Weight: 575 Flesh: 60% 4s, 40% 5s Feed: Ave. 5-10 lbs grain, free choice hay, pasture Sires: Angus, Balancer Wt. Conditions: 30-mile haul to the BARN weighed and loaded FOB the BARN.	Range: 530-610 Clean, few 1s	<b>**August 8 take-up **</b>
<b>Lot 2</b>	<b>76 head Steers</b>	<b>Total Weight</b>	<b>48,000-50,000</b>
	4 L1, 55 M1, 17 L&M2 72 Black, 2 BWF, 2 black-nosed CX Average Weight: 645 Flesh: 60% 4s, 40% 5s Feed: Ave. 8-10 lbs grain, free choice hay and pasture Sires: Angus, Angus X Wt. Conditions: 30-mile haul to the BARN weighed and loaded FOB the BARN.	Range: 620-690 Clean, few 1's	<b>**August 8 take-up **</b>
<b>Lot 3</b>	<b>72 head Steers</b>	<b>Total Weight</b>	<b>48,000-50,000</b>
	5 L1, 57 M1, 10 L&M2 63 Black, 9 BWF Average Weight: 685 Flesh: 10 % 4s and 90% 5s Feed: Ave. 5-10 lbs grain, free choice hay and pasture Sires: Angus, Angus X, Balancer Wt. Conditions: 30-mile haul to the BARN weighed and loaded FOB the BARN.	Range: 620-790, 3@850 Clean, few 1s	<b>*2 Owner Load                      Sharps Creek and Spring Hope</b>  <b>**August 8 take-up**</b>
<b>Lot 4</b>	<b>70 head Steers</b>	<b>Total Weight</b>	<b>*48,000-50,000</b>
	11 L1, 56 M1, 3 L&M2 69 Black, 1 BWF Average Weight: 705 Flesh: 40% 4s, 60% 5s Feed: 8-10 lbs grain, hay, and pasture Sire: Angus, Angus X Randy Wilmoth of <b>Wilmoth Farms</b> : 434 989-1381 Wt. Conditions: Loaded FOB the farm, 25-mile haul to CAT Scales at Zions Crossroads. 2% Shrink.	Range: 650-800, 1@860 Clean, few 1s	<b>*1 Owner Load*</b>  <b>** Schedule Take-up**</b>

<b>Lot 5</b>	<b>69 head Steers</b>	<b>Total Weight</b>	<b>48,000-50,000</b>
	65 M1, 4 L&M2 69 Black Average Weight: 710 Flesh: 100% 5s Feed: Ave. 10 lbs grain, free choice hay and pasture Sires: Angus, Angus X Wt. Conditions: 40-60-mile haul to the BARN weighed and loaded FOB the BARN.	Range: 600-780 Clean few 1's	<b>*2-Owner Load</b> <b>Woodville Farm and Grind N Stone</b> <b>**August 12 take-up**</b>
<b>Lot 6</b>	<b>68 head Steers</b>	<b>Total Weight</b>	<b>48,000-50,000</b>
	1 L1, 65 M1, 2 L&M 2 68 Black Average Weight: 730 Flesh: 100% 5s Feed: Ave. 5 lbs grain, free choice hay, and pasture Sires: Angus X, Balancer Lin Jones of <b>Berk Mar Farm</b> : 434-981-5424, (Berkley 434-981-2278) Wt. Conditions: Loaded FOB the farm, 25-mile haul to CAT scales at Zions Crossroads. 2% shrink.	Range: 670-790 Clean, few 1s	<b>*1 Owner Load*</b> <b>**Schedule Take-up**</b>
<b>Lot 7</b>	<b>67 head Steers</b>	<b>Total Weight</b>	<b>48,000-50,000</b>
	7 L1, 59 M1, 1 L&M2 63 Black, 2 BWF, 2 Black-nose CX Average Weight: 740 Flesh: 10% 4s, 90% 5s Feed: 8-10 lbs grain, free choice hay and pasture Sires: Angus, Angus X, Balancer Wt. Conditions: 10-20-mile haul to the BARN weighed and loaded FOB the BARN.	Range: 680-830 Clean, few 1s	<b>**August 8 take-up **</b>
<b>Lot 8</b>	<b>66 head Steers</b>	<b>Total Weight</b>	<b>49,000-50,000</b>
	1 L1, 61 M1, 4 L&M2 65 Black, 1 BWF Average Weight: 755 Flesh: 100% 5s Feed: Ave 10lbs grain mix, free choice hay and pasture Sires: Angus, Angus X Wt. Conditions: 10-20-mile haul to the BARN weighed and loaded FOB the BARN.	Range: 680-850 Clean few 1's	<b>Dunn and Whetstone</b> <b>*2 Owner Load</b> <b>**August 7 take-up **</b>

<b>Lot 9</b>	<b>64 head Steers</b>	<b>Total Weight</b>	<b>48,000-50,000</b>
	<p>7 L1, 55 M1, 2 L&amp;M2  62 Black, 2 BWF  Average Weight: 760                      Range: 750-850  Flesh: 100% 5s                              Clean, few 1s  Feed: 5 lbs grain, free choice hay and pasture  Sires: Angus X  Jim Pugh of <b>Sweet Springs Farm</b> 434-610-7265  Wt. Conditions: Loaded FOB the Farm 1/2-mile haul to Meherrin Ag  Chemicals scales 2% Shrink</p>		<b>*1 Owner Load</b>  <b>**Schedule take-up**</b>
<b>Lot 10</b>	<b>62 head Steers</b>	<b>Total Weight</b>	<b>48,000-49,000</b>
	<p>4 L1, 57 M1, 1 L&amp;M2  59 Black, 3 BWF  Average Weight: 785                      Range: 650-850, 2@950  Flesh: 90% 5s, 10% 6s                      Clean, few 1s  Feed: 10 lbs grain, free choice hay  and pasture  Sires: Angus, Angus X  Todd Smith of <b>High Bridge Farm</b> 434-390-7518  Wt. Conditions: 30-40mile haul to the BARN  weighed and loaded FOB the BARN.</p>		<b>*1 Owner Load</b>  <b>**August 12 take-up**</b>
<b>Lot 11</b>	<b>63 head Steers</b>	<b>Total Weight</b>	<b>48,000-50,000</b>
	<p>2L1, 58 M1, 3 L&amp;M 2s  61 Black, 1 BWF, 1 RED  Average Weight: 790                      Range: 680-860  Flesh: 90% 5s, 10 % 6s                      Clean  Feed: 10 lbs grain, free choice hay and  pasture  Sires: Angus, Angus X  Wt. Conditions: 10-25-mile haul the BARN weighed and loaded FOB the  BARN.</p>		<b>*2 Owner Load</b> <b>Crews Family Farm and</b> <b>Evergreen Farms</b>  <b>**August 7 take-up**</b>
<b>Lot 12</b>	<b>60 head Steers</b>	<b>Total Weight</b>	<b>48,000-50,000</b>
	<p>21 L1, 39 M1  54 Black, 3 BWF, 2 SMK, 1 RED  Average Weight: 820                      Range: 780-900  Flesh: 100% 5s                              Clean  Feed: 10lbs grain, free choice hay and pasture  Sire: Angus X, Balancer, Gelbvieh  Wt. Conditions: 30-60mile haul to the BARN  weighed and loaded FOB the BARN.</p>		<b>Morris/Moyers</b>  <b>**August 7 take-up**</b>

<b>Lot 13</b>	<b>58 head Steers</b>	<b>Total Weight</b>	<b>48,000-50,000</b>
	3L1, 55 M1 57 Black, 1 Black-nosed CX Average Weight: 845 Flesh: 100% 5s Feed: 5 lbs grain, free choice hay and pasture Sires: Angus X, Balancer Lin Jones of <b>Berk Mar Farm</b> : 434-981-5424, (Berkley 434-981-2278) Wt. Conditions: Loaded FOB the farm, 25-mile haul to CAT scales at Zions Crossroads. 2% shrink.	Range: 800-940 Clean	<b>*1 Owner Load</b>  <b>**Schedule Take-up**</b>
<b>Lot 14</b>	<b>56 head Steers</b>	<b>Total Weight</b>	<b>48,000-50,000</b>
	2 L1, 54 M1 55 Black, 1 BWF Average Weight: 880 Flesh: 90% 5s, 10% 6s Feed: 10 lbs grain mix, corn silage, free choice hay and pasture Sires: Angus X, Balancer Robert Womack of <b>Woodville Farm</b> : 434 547-9611 Wt. Conditions: Loaded FOB the Farm 30-mile haul to West Rock, Rt 15, Dillwyn 2% Shrink	Range: 800-980, 1@1050 Clean	<b>*1 Owner Load</b>  <b>**Schedule Take-up**</b>
<b>Lot 15</b>	<b>56 head Steers</b>	<b>Total Weight</b>	<b>48,000-50,000</b>
	2 L1, 54 M1 41 Black, 15 BWF Average Weight: 880 Flesh: 100% 5s Feed: 10 lbs grain mix, corn silage, hay/pasture Sires: Angus, Angus X, Balancer Clark Poindexter of <b>Grind N Stone Farm</b> : 434-660-7530 Wt. Conditions: Loaded FOB farm, 20-mile haul to Meherrin Ag Chemicals scales. 2% Shrink	Range: 800-950, 2@ 1050 Clean, few 1s	<b>*1 Owner Load</b>  <b>**Schedule Take-up**</b>
<b>Lot 16</b>	<b>55 head Steers</b>	<b>Total Weight</b>	<b>49,000-50,000</b>
	2 L1, 52 M1, 1 L&M2 55 Black Average Weight: 890 Flesh: 95% 5s, 5% 6s Feed: Ave. 10 lbs grain, free choice hay and pasture Sires: Angus, Angus X, Balancer Wt. Conditions: 20/40-mile haul to the BARN weighed and loaded FOB the BARN.	Range: 820-1000, 3@1100 Clean	<b>**August 7 take-up**</b>

<b>Lot 17</b>	<b>52 head Steers</b>	<b>Total Weight</b>	<b>49,000-50,000</b>
	52 M1		<b>*1 Owner Load</b>
	46 Black, 6 BWF		
	Average Weight: 950	Range: 900-1050	
	Flesh: 90% 5s, 10%6s	Clean, few 1s	
	Feed: 10 lbs grain, free choice hay and pasture		
	Sires: Angus, Angus X, Balancer		
	Brett Stratton of <b>Evergreen Farms</b> : 434-610-7625		
	Wt. Conditions: 25-mile haul the BARN weighed and loaded FOB the BARN.		
			<b>**Schedule Take-up**</b>

## HEIFERS



<b>Lot 18</b>	<b>86 head Heifers</b>	<b>Total Weight</b>	<b>48,000-50,500</b>
	1 L1, 44 M1, 41 L&M 2s		
	84 Black, 1 BWF, 1 SMK		
	Average Weight: 575	Range: 550-600	
	Flesh: 30% 4s, 70% 5s	Clean few 1's	
	Feed: Ave. 5-10 lbs grain, free choice hay and pasture		
	Sires: Angus, Angus X, Balancer		
	Wt. Conditions: 20/40-mile haul to the BARN weighed and loaded FOB the BARN.		
			<b>**August 9 take-up**</b>

<b>Lot 19</b>	<b>79 head Heifers</b>	<b>Total Weight</b>	<b>48,000-50,000</b>
	2 L1, 60 M1, 17 L&M2 73 Black, 4 BWF, 2 SMK Average Weight: 630 Flesh: 40% 4s, 60% 5s Feed: Ave. 5-10 lbs grain, free choice hay and pasture, some silage Sires: Angus X, Balancer Wt. Conditions: 40/60-mile haul to the BARN weighed and loaded FOB the BARN.	Range: 610-650 Clean few 1's	<b>** August 9 take-up**</b>
<b>Lot 20</b>	<b>73 head Heifers</b>	<b>Total Weight</b>	<b>48,000-50,500</b>
	65 M1, 8 L&M2 67 Black, 5 BWF, 1 black-nose CX Average Weight: 685 Flesh: 40% 4s, 60% 5s Feed: Ave 5-10lbs grain, free choice hay and pasture Sires: Angus, Angus X Wt. Conditions: 20/40-mile haul to the BARN weighed and loaded FOB the BARN.	Range: 670-710 Clean few 1s	<b>**August 9 take-up**</b>
<b>Lot 21</b>	<b>71 head Heifers</b>	<b>Total Weight</b>	<b>49,000-50,000</b>
	3 L1, 64 M1, 4 L&M2 66 Black, 5 BWF Average Weight: 695 Flesh: 100% 5s Feed: Ave. 5-10 lbs grain, free choice hay and pasture Sires: Angus X, Balancer Wt. Conditions: 40-60-mile haul to the BARN weighed and loaded FOB the BARN.	Range: 650-780, 2@810 Clean few 1s	<b>2 Owner Load            High Bridge Farm and            Sweet Springs            **August 13 take-up**</b>
<b>Lot 22</b>	<b>70 head Heifers</b>	<b>Total Weight</b>	<b>48,000-50,000</b>
	8 L1, 57 M1, 5 L&M2 69 Black, 1 BWF Average Weight: 705 Flesh: 100% 5s Feed: 10 lbs grain, hay and pasture Sires: Angus, Angus X Wt. Conditions: 30-mile haul to the BARN weighed and loaded FOB the BARN.	Range: 650-780, 2@820 Clean, few 1s	<b>Morris/Moyers/Inglewood            **August 9 Take-up**</b>



<b>Lot 23</b>	<b>69 head Heifers</b>	<b>Total Weight</b>	<b>48,000-50,500</b>
	66 M1, 3 L&M2 64 Black, 5 BWF Average Weight: 720 Flesh: 90% 5s, 10% 6s Feed: Ave. 5-10 lbs grain, free choice hay and pasture Sires: Angus X, Balancer <b>Evergreen Farms and Berk Mar Farm</b> Contact: Brett Stratton 434-610-7625. Wt. Conditions: 25-30-mile haul to the BARN weighed and loaded FOB the BARN.	Range: 650-800, 2@850 Clean, few 1s	<b>*2 Owner Load</b>
			<b>**Schedule Take-up**</b>
<b>Lot 24</b>	<b>66 head Heifers</b>	<b>Total Weight</b>	<b>49,000-50,000</b>
	4 L1, 62 M1 51 Black, 15 BWF Average Weight: 750 Flesh: 90% 5s, 10% 6s Feed: Ave. 10 lbs grain mixture, corn silage, free choice hay and pasture Sires: Angus X Clark Poindexter of <b>Grind N Stone Farm</b> : 434-660-7530 Wt. Conditions: Loaded FOB farm, 20-mile haul to Meherrin Ag Chemicals scales. 2% Shrink	Range: 680-850, 2@950 Clean	
			<b>**Schedule Take-up**</b>
<b>Lot 25</b>	<b>65 head Heifers</b>	<b>Total Weight</b>	<b>49,000-50,000</b>
	2 L1, 58 M1, 5 L&M2 63 Black, 1 BWF, 1 Black-nosed CX Average Weight: 765 Flesh: 100% 5s Feed: Ave. 10 lbs grain mixture, corn silage, free choice hay and pasture Sire: Angus X Wt. Conditions: 20/40-mile haul to the BARN weighed and loaded FOB the BARN.	Range: 730-850, 2@950 Clean	
			<b>**August 9 take-up**</b>