

Buckingham Cattlemen's Association Weaned Feeder Calf Sale

Virginia Quality Assured Purple Tag Certified

****PICK UP LOCATION****

Buckingham Agricultural Resource Network (BARN)

11851 W. James Anderson Hwy, Buckingham, VA

Access Route 60 just west of Buckingham Courthouse via Route 24, 56, 20, and 15

Videos of Sale Cattle by Producer available at www.buckinghamcattlemensassociation.com

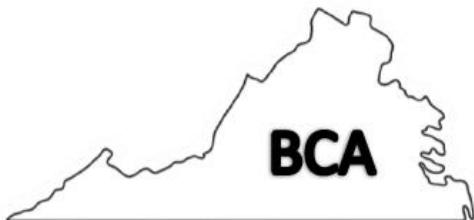
Home bred and raised calves, intensive genetic program for Docility and Growth

Tel-O-Auction, 6:00 PM

August 7, 2023

Obtain a bidder number and information from the Virginia Cattlemen's Association at (540) 992-1009

Tel-O-Auction number: 1(800) 309-2350 * Code: 4505513#



[Videos of Producer Cattle
can be found here!](#)



Birthdates provided, September 1 and December 31, 2022

September and early October calves AI sired by:



Sire	Yearling wt	Docity	Carcass weight	Marbling	Ribeye area	fat
Tahoe	+135	+24	+48	+.91	+.78	+.006
Playbook	+104	+26	+45	+.47	+.33	+.045
Impact's Fortune	+113	+14	+19	+.08	+.65	-0.08

GRADING INFORMATION

Feeder Cattle

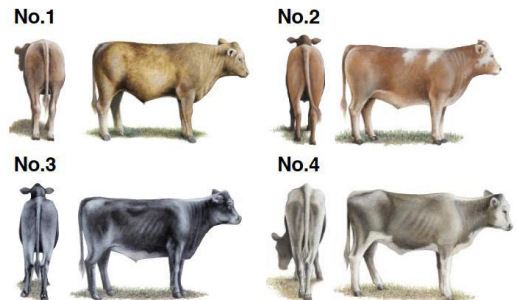
Official U.S. Grades

Frame Size



Large and medium frame pictures depict minimum grade requirements. The small frame picture represents an animal typical of the grade.

Thickness



No. 1, No. 2 and No. 3 thickness pictures depict minimum grade requirements. The No. 4 picture represents an animal typical of the grade.

Copies of the Official United States Standards for Feeder Cattle are available upon request



Large framed cattle are those that are expected to weigh over 1250lbs. when their external fat is approximately 0.5 inches at the 12th rib where beef carcasses are “ribbed” for grading purposes. The 0.5-inch target is used in the USDA standards as a reasonable live animal predictor for a calf’s ability to grade choice or higher.

GRADE	STEER (LBS)	HEIFER (LBS)
LARGE (L)	1250 OR greater	1150 or greater
MEDIUM (M)	1100 TO 1249	1000 TO 1149

Stag Guarantee: Any steer found to be a stag within 90 days of the delivery date, buyer will be refunded \$250

Heifer Guarantee: If a Buyer purchases a heifer that happens to be bred, the producer agrees to refund \$300 to the purchaser. This is subject to a veterinarian's certification that the heifer is pregnant and the returned ear tag verifying the identification and farm of origin.

*Weight estimated for Aug. 9-11, 15th ship date. Loads held longer, buyer will be responsible for additional weight.

Health Program:

All calves Double Vaccinated with Boehringer Ingelheim health products:

Pyramid 5 + Prespense (Modified Live) for IBR, PI3, BVD

Caliber 7 or Calvary 9 (Clostridial) and Dewormed

No ACTIVE pink eye will be shipped, some small spots may be present on previously treated animals

All Producers are BQA Certified

Contact: Jennifer Ligon (434) 607-5814 or Roger Morris (434) 315-4294

VDACS Grader: Scott Talley (540) 290-1311

STEERS

Lot 1	82 head Steers	Total Weight	48,000-50,000
\$2.73	5 L1, 42 M1, 35 L&M2 78 Black, 1 BWF, 2 SMK, 1 black-nose CX Average Weight: 610 Range: 560-680 Flesh: 60% 4s, 40% 5s Clean, few 1s Feed: Ave. 5-10 lbs grain, free choice hay, pasture Sires: Angus, Balancer Wt. Conditions: 30-mile haul to the BARN weighed and loaded FOB the BARN.		** August 10 take-up **
Lot 2	76 head Steers	Total Weight	48,000-50,000
\$2.7650	7 L1, 52 M1, 17 L&M2 68 Black, 8 BWF Average Weight: 640 Range: 550-740 Flesh: 20% 4s, 80% 5s Clean Feed: Ave. 8-10 lbs grain, free choice hay and pasture Sires: Angus, Angus X Wt. Conditions: 30-mile haul to the BARN weighed and loaded FOB the BARN.		*2-Owner load Sharps Creek and Spring Hope ** August 15 take-up **
Lot 3	72 head Steers	Total Weight	48,000-50,000
\$2.75	6 L1, 63 M1, 3 L&M2 70 Black, 2 BWF Average Weight: 670 Range: 560-750 Flesh: 10 % 4s and 90% 5s Clean, few 1s Feed: Ave. 5-10 lbs grain, free choice hay and pasture Sires: Angus, Angus X, Balancer Wt. Conditions: 30-90 mile haul to the BARN weighed and loaded FOB the BARN.		*2 Owner Load Berk Mar Farm and Twilight Farms, LLC ** August 10 take-up**
Lot 4	71 head Steers	Total Weight	*48,000-50,000
\$2.74	7 L1, 57 M1, 7 L&M2 69 Black, 2 BWF Average Weight: 695 Range: 600-790 Flesh: 30% 4s, 70% 5s Clean, few 1s Feed: 8-10 lbs grain, hay, and pasture Sire: Angus, Angus X Randy Wilmoth of Wilmoth Farms : 434 989-1381 Wt. Conditions: Loaded FOB the farm, 25-mile haul to CAT Scales at Zions Crossroads. 2% Shrink.		*1 Owner Load* ** Schedule Take-up**

Lot 5	68 head Steers	Total Weight	48,000-50,000
\$2.67	2 L1, 57 M1, 9 L&M2 68 Black Average Weight: 710 Flesh: 100% 5s Feed: Ave. 10 lbs grain, free choice hay and pasture Sires: Angus, Angus X Wt. Conditions: Pre-weigh at West Rock scales in Dillwyn, Rt. 15. Woodville will be loaded FOB the Farm 30-mile haul to the BARN. Thompson (40-mile haul) cattle weighed and loaded FOB the BARN, then 6-mile haul to West Rock scales for final weight.	Woodville Farm and Thompson Family Farm Range: 600-780, 3 @ 850 Clean few 1's	*2-Owner Load **August 10 Take-up**
	Lot 6	68 head Steers	Total Weight
\$2.63	20 L1, 47 M1, 1 L&M 2 63 Black, 5 BWF Average Weight: 730 Flesh: 20% 4s, 80% 5s Feed: Ave. 10 lbs grain mix, free choice hay, and pasture Sires: Angus X, Balancer, Gelbvieh Wt. Conditions: 30-40 mile haul to the BARN weighed and loaded FOB the BARN.	C H Morris & Sons and Grind N Stone Range: 660-790, 3@850 Clean, few 1s	*2 Owner Load* **August 9 take-up**
	Lot 7	66 head Steers	Total Weight
\$2.57	3 L1, 62 M1, 1 L&M2 66 Black Average Weight: 740 Flesh: 100% 5s Feed: 8-10 lbs grain, free choice hay and pasture Sires: Angus, Angus X Wt. Conditions: 10-20-mile haul to the BARN weighed and loaded FOB the BARN.	Well Water and Whetstone Farm Range: 680-830 Clean, few 1s	*2 Owner Load **August 9 take-up **
	Lot 8	64 head Steers	Total Weight
\$2.5650	7 L1, 54 M1, 3 L&M2 56 Black, 8 BWF Average Weight: 770 Flesh: 100% 5s Feed: Ave 10lbs grain, free choice hay and pasture Sires: Angus X, Balancer Bob Martin of Creek View Farms : 434-610-0411 Wt. Conditions: 20-40-mile haul to the BARN weighed and loaded FOB the BARN.	*Creek View Farm and Twilight Farm (Morris) Range: 680-850 Clean few 1's	*2 Owner Load **August 9 Take-up**

Lot 9	63 head Steers	Total Weight	48,000-50,000
\$2.6550	14 L1, 49 M1 63 Black Average Weight: 780 Flesh: 95% 5s, 5% 6s Feed: 5 lbs grain, free choice hay and pasture Sires: Angus X, Balancer Lin Jones of Berk Mar Farm : 434-581-3997, 434-981-5424 Wt. Conditions: Loaded FOB the farm, 25-mile haul to CAT scales at Zions Crossroads. 2% shrink.	Range: 750-850 Clean, few 1s	*1 Owner Load **Schedule Take-up**
	Lot 10	62 head Steers	Total Weight
\$2.6450	5 L1, 55 M1, 2 L&M2 55 Black, 6 BWF, 1 Red Average Weight: 790 Flesh: 90% 5s, 10% 6s Feed: 10 lbs grain, free choice hay and pasture Sires: Angus, Angus X Brett Stratton of Evergreen Farms : 434-610-7625 Wt. Conditions: 40-mile haul to the BARN weighed and loaded FOB the BARN.	Range: 690-880 Clean, few 1s	*2 Owner Load Evergreen Farms and Crooked Creek Farms **Schedule Take-up**
	Lot 11	61 head Steers	Total Weight
\$2.4750	4L1, 55 M1, 2 L&M 2s 59 Black, 2 BWF Average Weight: 810 Flesh: 100% 5s Feed: 10 lbs grain, free choice hay and pasture Sires: Angus X, Balancer Jim Pugh of Sweet Springs Farm 434-610-7265 Wt. Conditions: Loaded FOB the Farm 1/2-mile haul to Meherrin Ag Chemicals scales 2% Shrink	Range: 700-900 Clean	*1 Owner Load **Schedule take-up**
	Lot 12	60 head Steers	Total Weight
\$2.44	7 L1, 52 M1, 1 L&M2 57 Black, 3 BWF Average Weight: 820 Flesh: 100% 5s Feed: 10lbs grain, free choice hay and pasture Sire: Angus, Angus X Todd Smith of High Bridge Farm 434-390-7518 Wt. Conditions: 30-40mile haul to the BARN weighed and loaded FOB the BARN.	Range: 660-880, 3@950 Clean	*1 Owner Load **August 15 take-up**

Lot 13	60 head Steers	Total Weight	48,000-50,000
\$2.46	6L1, 54 M1	*1 Owner Load	
	60 Black Average Weight: 825 Flesh: 100% 5s Feed: 10 lbs grain, free choice hay and pasture Sires: Angus X, Balancer	Range: 780-960 Clean	
	Robert Womack of Woodville Farm : 434 547-9611 Wt. Conditions: Loaded FOB the Farm 30-mile haul to West Rock, Rt 15, Dillwyn 2% Shrink **Schedule Take-up**		
Lot 14	57 head Steers	Total Weight	48,000-50,000
\$2.42	9 L1, 48 M1	*1 Owner Load	
	46 Black, 11 BWF Average Weight: 860 Flesh: 100% 5s Feed: 10 lbs grain mix, corn silage, free choice hay and pasture Sires: Angus X, Balancer	Range: 800-950 Clean	
	Clark Poindexter of Grind N Stone Farm : 434-660-7530 Wt. Conditions: Loaded FOB farm, 20-mile haul to Meherrin Ag Chemicals scales. 2% Shrink **Schedule Take-up**		
Lot 15	56 head Steers	Total Weight	48,000-50,000
\$2.28	8 L1, 48 M1		
	53 Black, 1 BWF, 1 SMK, 1 Red Average Weight: 865 Flesh: 100% 5s Feed: 10 lbs grain, free choice hay and pasture Sires: Angus, Angus X, Balancer	Range: 760-950, 4@ 1000 Clean, few 1s	
	Wt. Conditions: 20/40-mile haul to the BARN weighed and loaded FOB the BARN. **August 9 take-up**		
Lot 16	54 head Steers	Total Weight	49,000-50,000
\$2.4250	7 L1, 47 M1	*1 Owner Load	
	48 Black, 6 BWF Average Weight: 915 Flesh: 95% 5s, 5% 6s Feed: Ave. 10 lbs grain, free choice hay and pasture Sires: Angus, Angus X, Balancer	Range: 860-960 Clean	
	Brett Stratton of Evergreen Farms : 434-610-7625 Wt. Conditions: 25-mile haul Lynchburg Livestock Market weighed and loaded FOB the market. **Schedule Take-up**		

Lot 17	63 head Steers	Total Weight	30,000-32,000
\$2.6850	6 L1, 22 M1, 35 L&M2 62 Black, 1 BWF Average Weight: 495 Flesh: 90% 4s, 10%5s	Range: 450-530 Clean, few 1s	
	Feed: 5-10 lbs grain, free choice hay and pasture Sires: Angus, Angus X, Balancer Wt. Conditions: 20/40-mile haul to the BARN weighed and loaded FOB the BARN.		**August 10 take-up**

HEIFERS



Lot 18	99 head Heifers	Total Weight	48,000-50,500
\$2.59	10 L1, 40 M1, 49 L&M 2s 94 Black, 5 BWF Average Weight: 510 Flesh: 40% 4s, 60% 5s	Range: 480-540 Clean few 1's	
	Feed: Ave. 5-10 lbs grain, free choice hay and pasture Sires: Angus, Angus X, Balancer Wt. Conditions: 20/40-mile haul to the BARN weighed and loaded FOB the BARN.		**August 11 take-up**

Lot 19	87 head Heifers	Total Weight	48,000-50,000
\$2.5350	3 L1, 47 M1, 37 L&M2 79 Black, 7 BWF, 1 CX Average Weight: 570 Flesh: 40% 4s, 60% 5s Feed: Ave. 5-10 lbs grain, free choice hay and pasture, some silage Sires: Angus X, Balancer Wt. Conditions: 40/60-mile haul to the BARN weighed and loaded FOB the BARN.	Range: 550-610 Clean few 1's	** August 11 take-up**
Lot 20	80 head Heifers	Total Weight	48,000-50,500
\$2.4450	3 L1, 46 M1, 31 L&M2 77 Black, 1 BWF, 1 Red, 1 black-nose CX Average Weight: 630 Flesh: 40% 4s, 60% 5s Feed: Ave 5-10lbs grain, free choice hay and pasture Sires: Angus, Angus X, Balancer Wt. Conditions: 20/40-mile haul to the BARN weighed and loaded FOB the BARN.	Range: 600-660 Clean few 1s	**August 11 take-up**
Lot 21	72 head Heifers	Total Weight	49,000-50,000
\$2.40	3 L1, 68 M1, 1 L&M2 69 Black, 3 BWF Average Weight: 685 Flesh: 100% 5s Feed: Ave. 5-10 lbs grain, free choice hay and pasture Sires: Angus X, Balancer Evergreen Farms and Berk Mar Farm Contact: Brett Stratton 434-610-7625. Wt. Conditions: 30-mile haul to the BARN weighed and loaded FOB the BARN.	Range: 610-770 Clean few 1s	2 Owner Load Evergreen Farms and Berk Mar Farm **Schedule Take-up**
Lot 22	70 head Heifers	Total Weight	48,000-50,000
\$2.40	63 M1, 7 L&M2 65 Black, 3 BWF, 2 CX Average Weight: 685 Flesh: 10% 4s, 90% 5s Feed: 10 lbs grain, hay and pasture Sires: Angus, Angus X Wt. Conditions: 30-mile haul to the BARN weighed and loaded FOB the BARN.	Range: 600-780 Clean, few 1s	*2 Owner Load* Sweet Springs and Whetstone Farm **August 11 Take-up**

Lot 23	73 head Heifers	Total Weight	48,000-50,500
\$2.28	2 L1, 61 M1, 10 L&M2 73 Black		*2 Owner Load
	Average Weight: 690 Flesh: 90% 5s, 10% 6s Feed: Ave. 5-10 lbs grain, free choice hay and pasture Sires: Angus X, Balancer Wt. Conditions: Pre-weigh at West Rock scales in Dillwyn, Rt. 15. Woodville will be loaded FOB the Farm 30-mile haul to the BARN. Thompson (40-mile haul) cattle weighed and loaded FOB the BARN, then 6-mile haul to West Rock scales for final weight.	Range: 600-740 Clean, few 1s	Woodville and Thompson Family Farm **August 11 take-up**
Lot 24	72 head Heifers	Total Weight	49,000-50,500
\$2.25	3 L1, 66 M1, 3 L&M 2s 70 Black, 1 Red, 1 CX		
	Average Weight: 695 Flesh: 20% 4s, 80% 5s Feed: Ave. 5-10 lbs grain, free choice hay and pasture Sires: Angus X, Balancer Wt. Conditions: 20/40-mile haul to the BARN weighed and loaded FOB the BARN.	Range: 680-730 Clean	**August 11 take-up**
Lot 25	64 head Heifers	Total Weight	49,000-50,000
\$2.25	12 L1, 52 M1 55 Black, 7 BWF, 2 Red		*1 owner load*
	Average Weight: 760 Flesh: 5% 4s, 95% 5s Feed: Ave. 10 lbs grain mixture, corn silage, free choice hay and pasture Sire: Angus X Clark Poindexter of Grind N Stone Farm : 434-660-7530 Wt. Conditions: Loaded FOB farm, 20-mile haul to Meherrin Ag Chemicals scales. 2% Shrink	Range: 700-890 Clean	**Schedule Take-up**
Lot 26	64 head Heifers	Total Weight	49,000-50,500
\$2.24	8 L1, 56 M1 62 Black, 2 BWF		
	Average Weight: 785 Flesh: 90% 5s, 10% 6s Feed: Ave. 5-10 lbs grain, free choice hay and pasture Sires: Angus X, Balancer Wt. Conditions: 20/40-mile haul to the BARN weighed and loaded FOB the BARN.	Range: 750-900 Clean few 1s	**August 10 take-up**



BCA