



Buckingham Cattlemen's Association Weaned Feeder Calf Sale

Virginia Quality Assured Purple Tag Certified



****PICK UP LOCATION****

**Buckingham Agricultural Resource Network (BARN)
11851 W. James Anderson Hwy, Buckingham, VA
Ready by 12 Noon**

Videos of Sale Cattle by Producer available at www.buckinghamcattlemensassociation.com

Home bred and raised calves, intensive genetic program for Docility and Growth

Tel-O-Auction, 6:00 PM

August 4, 2025

Obtain a bidder number and information from the Virginia Cattlemen's Association at (540) 992-1009
Tel-O-Auction number: 1(800) 309-2350 * Code: 4505513#



DVAuction
Broadcasting Real-Time Auctions

By registering at DV Auction, :
<https://buckinghamcattlemensassociation.dvauction.com/>,
you can access videos of sale cattle, the sale order, and bid
using the internet.
Buckingham Cattlemen's Association in partnership with the
Virginia Cattlemen's Association and DV Auction

Birthdates provided, September 1 through December 31, 2024

The majority of September born AI calves by:



Sire	Yearling wt	Docity	Carcass weight	Marbling	Ribeye area	fat
Tahoe	+135	+24	+48	+.91	+.78	+.006
Geronimo	+124	+12	+24	+.45	+.72	-.02

GRADING INFORMATION

Feeder Cattle

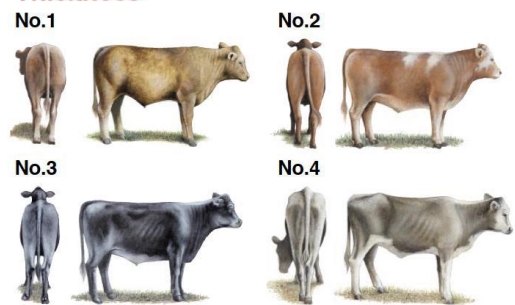
Official U.S. Grades

Frame Size



Large and medium frame pictures depict minimum grade requirements. The small frame picture represents an animal typical of the grade.

Thickness



No. 1, No. 2 and No. 3 thickness pictures depict minimum grade requirements. The No. 4 picture represents an animal typical of the grade.

Copies of the Official United States Standards for Feeder Cattle are available upon request

USDA United States Department of Agriculture Agricultural Marketing Service Livestock and Seed Program Washington, D.C. 20250 October 2000

Large framed cattle are those that are expected to weigh over 1250lbs. when their external fat is approximately 0.5 inches at the 12th rib where beef carcasses are “ribbed” for grading purposes. The 0.5-inch target is used in the USDA standards as a reasonable live animal predictor for a calf’s ability to grade choice or higher.

GRADE	STEER (LBS)	HEIFER (LBS)
LARGE (L)	1250 OR greater	1150 or greater
MEDIUM (M)	1100 TO 1249	1000 TO 1149

Stag Guarantee: Any steer found to be a stag within 90 days of the delivery date, buyer will be refunded \$250

Heifer Guarantee: If a Buyer purchases a heifer that happens to be bred, buyer will be refunded \$300.

*Guarantees are subject to a veterinarian's certification of being a stag or confirmation of pregnancy. An ear tag verifying the identification and farm of origin is also a requirement.

*Weight estimated for listed load out dates. Loads held longer, **buyer will be responsible for additional weight.**

Health Program:

All calves Double Vaccinated with Boehringer Ingelheim health products:

Pyramid 5 + Presponse (Modified Live) for IBR, PI3, BVD

Caliber 7 or Calvary 9 (Clostridial) and Dewormed

No ACTIVE pink eye will be shipped, some small spots may be present on previously treated animals

All Producers are BQA Certified

Contact: Jennifer Ligon (434) 607-5814 or Roger Morris (434) 315-4294

VDACS Grader: Scott Talley (540) 290-1311

STEERS

Lot 1	83 Steers	BCA Comingled	Average 595
	<p>60 M1, 23 L&M2 76 Black, 7 BWF</p> <p>Range: 500-650 Clean, few 1s Flesh: 50% 4s, 50% 5s</p> <p>Feed: Ave. 5-10 lbs grain, free choice hay, pasture Sires: Angus, Angus X Wt. Conditions: 10-40 mile haul to the BARN weighed and loaded FOB the BARN.</p> <p style="text-align: right;">**August 7 take-up **</p>		
Lot 2	78 Steers	3 Owner: CH MORRIS/MORRIS/INGLEWOOD	Average 635
	<p>20 L1, 42 M1, 16 L&M2 78 Black</p> <p>Range: 570-750 Clean, few 1's Flesh: 50% 4s, 50% 5s</p> <p>Feed: Ave. 8-10 lbs grain, free choice hay and pasture Sires: Angus/Gelbvieh Wt. Conditions: 20-mile haul to the BARN weighed and loaded FOB the BARN.</p> <p style="text-align: right;">**August 7 take-up **</p>		
Lot 3	75 Steers	WILMOTH FARMS	Average 660
	<p>15 L1, 58 M1, 2 L&M2 70 Black, 5 BWF</p> <p>Range: 550-780 Clean, few 1s Flesh: 50 % 4s and 50% 5s</p> <p>Feed: Ave. 5-10 lbs grain, free choice hay and pasture Sires: Angus, Angus X Randy Wilmoth of Wilmoth Farms: 434 989-1381 Wt. Conditions: Loaded FOB the farm, 25-mile haul to CAT Scales at Zions Crossroads. 2% Shrink.</p> <p style="text-align: right;">** Schedule Take-up **</p>		
Lot 4	73 Steers	2 Owner: BERK MAR/CROOKED CREEK	Average 670
	<p>3 L1, 63 M1, 7 L&M2 73 Black</p> <p>Range: 600-740 Clean, few 1s Flesh: 40% 4s, 60% 5s</p> <p>Feed: 5-8 lbs grain, hay, and pasture Sire: Angus, Angus X Lin Jones of Berk Mar Farm: 434-981-5424, (Berkley 434-981-2278) Wt. Conditions: 20-40 mile haul to the BARN weighed and loaded FOB the BARN.</p> <p style="text-align: right;">**Schedule Take-up**</p>		

Lot 5	70 Steers	2 Owner: DUNN/WHETSTONE	Average 690
	60 M1, 10 L&M2 68 Black, 1 BWF, 1 black-nose CX Feed: Ave. 10 lbs grain, brewer's grain, free choice hay and pasture Sires: Angus, Angus X Wt. Conditions: 10-mile haul to the BARN weighed and loaded FOB the BARN. **August 7 take-up**	Range: 600-770 Clean few 1's Flesh: 20% 4S, 80% 5s	
Lot 6	70 Steers	2 Owner: GRIND N STONE/SPRING HOPE	Average 705
	7 L1, 61 M1, 2 L&M 2 54 Black, 9 BWF, 1 RWF, 6 black-nose CX Feed: Ave. 5 - 10 lbs grain mix, corn silage, hay/pasture Sires: Angus X Wt. Conditions: 20-40-mile haul to the BARN weighed and loaded FOB the BARN. **August 6 take-up**	Range: 620-770 few 1s Flesh: 10% 4s, 90% 5s	
Lot 7	68 Steers	BCA Comingled	Average 725
	1 L1, 64 M1, 3 L&M2 60 Black, 7 BWF, 1 Black-nose CX Feed: 5-10 lbs grain, free choice hay and pasture Sires: Angus, Angus X Wt. Conditions: 10-40 mile haul to the BARN weighed and loaded FOB the BARN. **August 6 take-up **	Range: 690-780 Clean, few 1s Flesh: 10% 4s, 90% 5s	
Lot 8	68 Steers	WOODVILLE FARM	Average 730
	2 L1, 64 M1, 2 L&M2 68 Black Feed: Ave 10lbs grain mix, free choice hay and pasture Sires: Angus, Angus X Robert Womack of Woodville Farm : 434 547-9611 Wt. Conditions: Loaded FOB the Farm 30-mile haul to West Rock, Rt 15, Dillwyn. 2% Shrink **Schedule Take-up**	Range: 660-810 Clean few 1's Flesh: 100% 5s	

Lot 9	65 Steers	HIGH BRIDGE FARM	Average 760
	5 L1, 60 M1 59 Black, 6 BWF Feed: 8 lbs grain, free choice hay and pasture Sires: Angus, Angus X Todd Smith of High Bridge Farm 434-390-7518 Wt. Conditions: 30 mile haul to the BARN weighed and loaded FOB the BARN.	Range: 650-850, 4@910 Clean, few 1s Flesh: 100% 5s **August 11 take-up**	
Lot 10	63 Steers	BERK MAR FARM	Average 785
	5 L1, 58 M1 63 Black Feed: 5 lbs grain, free choice hay and pasture Sires: Angus, Angus X Lin Jones of Berk Mar Farm : 434-981-5424, (Berkley 434-981-2278) Wt. Conditions: Loaded FOB the farm, 25-mile haul to CAT scales at Zions Crossroads. 2% shrink.	Range: 730-880, 1@950 Clean, few 1s Flesh: 90% 5s, 10% 6s **Schedule Take-up**	
Lot 11	62 Steers	2 Owner: CROOKED CREEK/EVERGREEN	Average 810
	3 L1, 59 M1 57 Black, 5 BWF Feed: 10 lbs grain, free choice hay and pasture Sires: Angus, Angus X Brett Stratton of Evergreen Farms : 434-610-7625 Wt. Conditions: 25-40 mile haul the BARN weighed and loaded FOB the BARN.	Range: 770-890, 2@910 Clean Flesh: 90% 5s, 10 % 6s **Schedule Take-up**	
Lot 12	59 Steers	GRIND-N-STONE FARM	Average 840
	58 M1, 1 L&M2 47 Black, 12 BWF Feed: 10lbs grain, free choice hay and pasture Sire: Angus X Clark Poindexter of Grind N Stone Farm : 434-660-7530 Wt. Conditions: Loaded FOB farm, 20-mile haul to Meherrin Ag Chemicals scales. 2% Shrink	Range: 790-950, 3@1000 Few 1s Flesh: 100% 5s **Schedule Take-up**	

Lot 13	58 Steers	BCA Comingled	Average 850
	8 L1, 49 M1, 1 L&M2 55 Black, 2 BWF, 1 Black-nosed CX		Range: 800-940, 1@1020 Clean Flesh: 100% 5s
	Feed: 5 lbs grain, free choice hay and pasture Sires: Angus, Angus X Wt. Conditions: 10-40-mile haul the BARN weighed and loaded FOB the BARN.		**August 6 take-up**

Lot 14	54 Steers	EVERGREEN FARM	Average 910
	1 L1, 53 M1 48 Black, 5 BWF, 1 RED		Range: 870-1000 Clean Flesh: 90% 5s, 10% 6s
	Feed: 10 lbs grain, free choice hay and pasture Sires: Angus X Brett Stratton of Evergreen Farms : 434-610-7625 Wt. Conditions: 25-mile haul the BARN weighed and loaded FOB the BARN.		**Schedule Take-up**



HEIFERS

Lot 15	91 Heifers	BCA Comingled	Average 545
	<p>2 L1, 44 M1, 45 L&M2s 85 Black, 4 BWF, 2 black-nose CX</p> <p>Feed: 5-10 lbs grain mix, corn silage, hay/pasture Sires: Angus, Angus X Wt. Conditions: 10-40 mile haul to the BARN weighed and loaded FOB the BARN.</p>	<p>Range: 500-575 Clean, few 1s Flesh: 10% 4s, 90% 5s</p>	<p>**August 8 take-up**</p>
Lot 16	83 Heifers	BCA Comingled	Average 600
	<p>5 L1, 51 M1, 27 L&M2 78 Black, 5 BWF</p> <p>Feed: Ave. 10 lbs grain, free choice hay and pasture Sires: Angus, Angus X Wt. Conditions: 10-40 mile haul to the BARN weighed and loaded FOB the BARN.</p>	<p>Range: 580-620 Clean Flesh: 10% 4s, 90% 5s</p>	<p>**August 8 take-up**</p>
Lot 17	78 head Heifers	BCA Comingled	Average 640
	<p>1 L1, 61 M1, 16 L&M 2s 70 Black, 5 BWF, 1 SMK, 2 Black-nose CX</p> <p>Feed: Ave. 5-10 lbs grain, free choice hay and pasture Sires: Angus, Angus X Wt. Conditions: 10-40 mile haul to the BARN weighed and loaded FOB the BARN.</p>	<p>Range: 620-655 Clean few 1's Flesh: 30% 4s, 70% 5s</p>	<p>**August 8 take-up**</p>
Lot 18	74 Heifers	BCA Comingled	Average 675
	<p>3 L1, 62 M1, 9 L&M2 70 Black, 4 BWF</p> <p>Feed: Ave. 5-10 lbs grain, free choice hay and pasture, some silage Sires: Angus X, Balancer Wt. Conditions: 10-40 mile haul to the BARN weighed and loaded FOB the BARN.</p>	<p>Range: 655-695 Clean few 1's Flesh: 40% 4s, 60% 5s</p>	<p>** August 8 take-up**</p>

Lot 19	72 Heifers	2 Owner: BERK MAR/EVERGREEN	Average 685
	70 M1, 2 L&M2 69 Black, 3 BWF		Range: 620-800 Clean few 1s Flesh: 100% 5s
	Feed: Ave 5-10lbs grain, free choice hay and pasture Sires: Angus, Angus X Brett Stratton of Evergreen Farms : 434-610-7625 Wt. Conditions: 25-mile haul the BARN weighed and loaded FOB the BARN. **Schedule Take-up**		
Lot 20	68 head Heifers	BCA Comingled	Average 730
	1 L1, 64 M1, 3 L&M2 67 Black, 1 BWF		Range: 720-850, 1@920 Clean few 1s Flesh: 100% 5s
	Feed: Ave. 5-10 lbs grain, free choice hay and pasture Sires: Angus, Angus X Wt. Conditions: 10-40 mile haul to the BARN weighed and loaded FOB the BARN. **August 8 take-up**		
Lot 21	62 head Heifers	GRIND-N-STONE FARM	Average 800
	62 M1 42 Black, 20 BWF		Range: 730-900 Clean, few 1s Flesh: 100% 5s
	Feed: 10 lbs grain mix, silage, hay and pasture Sires: Angus, Angus X Clark Poindexter of Grind N Stone Farm : 434-660-7530 Wt. Conditions: Loaded FOB farm, 20-mile haul to Meherrin Ag Chemicals scales. 2% Shrink **Schedule Take-up**		

