

Buckingham Cattlemen's Association Weaned Feeder Calf Sale

Virginia Quality Assured Purple Tag Certified

****PICK UP LOCATION****

Buckingham Agricultural Resource Network (BARN)

11851 W. James Anderson Hwy, Buckingham, VA

Access Route 60 just west of Buckingham Courthouse via Route 24, 56, 20, and 15

Videos of Sale Cattle by Producer available at <http://buckinghamcattlemensassociation.tripod.com>

**Home bred and raised calves, intensive genetic program with growth bulls,
Tel-O-Auction, 6:00 PM
August 5, 2019**

Obtain a bidder number and information from the Virginia Cattlemen's Association at (540) 992-1009
Tel-O-Auction number: 1(800) 309-2350 * Code: 4505513#



Birthdates provided, September 1 and December 31, 2018

***Few in late August**

September and early October calves AI sired by:



Sire	Yearling wt	Docity	Carcass weight	Marbling	Ribeye area	fat
Reserve	+92	+22	+26	+.76	+.77	-.038
Trust	+94	+28	+44	+.81	+.76	-.016
Hickok	+112	+33	+45	+.68	+.75	+.029

GRADING INFORMATION

Feeder Cattle

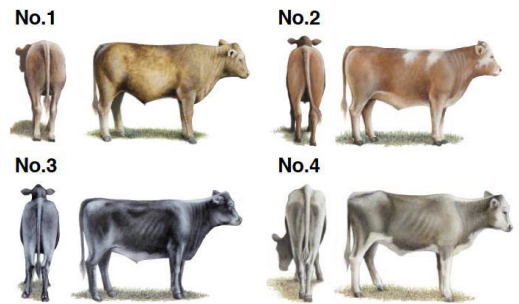
Official U.S. Grades

Frame Size



Large and medium frame pictures depict minimum grade requirements. The small frame picture represents an animal typical of the grade.

Thickness



No. 1, No. 2 and No. 3 thickness pictures depict minimum grade requirements. The No. 4 picture represents an animal typical of the grade.

Copies of the Official United States Standards for Feeder Cattle are available upon request

United States Department of Agriculture
 Agricultural Marketing Service
 Livestock and Seed Program
 Washington D.C. 20250 October 2000

Large framed cattle are those that are expected to weigh over 1250lbs. when their external fat is approximately 0.5 inches. at the 12th rib where beef carcasses are “ribbed” for grading purposes. The 0.5-inch target is used in the USDA standards as a reasonable live animal predictor for a calf’s ability to grade choice or higher.

GRADE	STEER (LBS)	HEIFER (LBS)
LARGE (L)	1250 OR greater	1150 or greater
MEDIUM (M)	1100 TO 1249	1000 TO 1149

Stag Guarantee: Any steer found to be a stag within 90 days of the delivery date, buyer will be refunded \$250.

Heifer Guarantee: If a Buyer purchases a heifer that happens to be bred, the producer agrees to refund \$300 to the purchaser. This is subject to a veterinarian's certification that the heifer is pregnant and the returned ear tag verifying the identification and farm of origin.

Health Program:

All calves Double Vaccinated with Zoetis Animal Health products:
 Bovi-Shield Gold 5/One Shot (Modified Live) for IBR, PI3, BVD
 7-Way Clostridal (Ultrabac 7) and Dewormed

All Producers are BQA Certified

Contact: Jennifer Ligon (434) 607-5814 or Roger Morris (434) 315-4294

Lot 5	74 head Steers	Total Weight	48,000-50,000
	9 L1, 63 M1, 2 L&M2 74 Black Average Weight: 665 Flesh: 90% 5s, 10% 6s Feed: Ave. 8 lbs grain, free choice hay and pasture Sires: Angus, Angus X, Balancer Berk Mar Farm (46 hd) and High Bridge Farm (28 hd) Contact: Lin Jones of Berk Mar Farm: 434 581-3997, 434 981-5424 Wt. Conditions: 40-mile haul to the BARN weighed and loaded FOB the BARN.	Range: 615-710 Clean few 1's	*2 Owner load* Majority Berk Mar \$1.5850 **No August 7,8,9 take-up**
Lot 6	73 head Steers	Total Weight	48,000-50,000
	12 L1, 55 M1, 6 L&M 2 70 Black, 3 BWF Average Weight: 675 Flesh: 90% 5s, 10% 6s Feed: Ave. 12 lbs grain, free choice hay and pasture Sires: Angus, Angus X Wt. Conditions: 20/40-mile haul to the BARN weighed and loaded FOB the BARN.	Range: 610-740 Clean, few 1s	\$1.5550 **August 8 take up **
Lot 7	70 head Steers	Total Weight	49,000-50,800
	27L1, 41 M1, 2 L&M2 55 Black, 11 BWF, 1 SMK, 1Black nose CX, 1 SMK WF, 1 RED Average Weight: 690 Flesh: 90% 5s, 10% 6s Feed: 10 lbs grain, free choice hay and pasture Sires: Angus, Angus X Bob Martin of Creek View Farms: 434-610-0411 Wt. Conditions: 25-mile haul Lynchburg Livestock Market weighed and loaded FOB the market.	Range: 600-800, 1@885 Clean, few 1s	*1 Owner Load* \$1.5725 **Schedule Take up**
Lot 8	72 head Steers	Total Weight	48,000-50,000
	31 L1, 39 M1, 2 L&M2 64 Black, 7 BWF, 1 SMK Average Weight: 695 Flesh: 5% 4s, 90% 5s, 5% 6s Feed: Ave 8-10lbs grain, free choice hay Sires: Angus, Angus X, Balancer Wt. Conditions: 20/40-mile haul to the BARN weighed and loaded FOB the BARN.	Range: 660-760 Clean few 1's	\$1.55 **August 7 take up**

Lot 9	71 head Steers	Total Weight	48,000-50,000
	23 L1, 39 M1, 9 L&M2 71 Black Average Weight: 695 Flesh: 10% 4s, 80% 5s, 10% 6s Feed: 10 lbs grain, free choice hay and pasture Robert Womack of Woodville Farm : 434 547-9611 Wt. Conditions: Loaded FOB the Farm 10-mile haul to Taylor Motor Scales, Cumberland 2% Shrink	Range: 600-790 Clean: 1S, few 0s	*1 Owner Load* \$1.5650 **NO August 7,8,9 take up**
Lot 10	64 head Steers	Total Weight	48,000-50,000
	6L1, 55 M1, 3 L&M2 44 Black, 20 BWF Average Weight: 770 Flesh: 80% 5s, 20% 6s Feed: 10 lbs grain, free choice hay and pasture Sires: Angus, Angus X, Gelbvieh, Balancer Brett Stratton of Evergreen Farms : 434-610-4261 Wt. Conditions: 25-mile haul Lynchburg Livestock Market weighed and loaded FOB the market.	Range: 700-810 Clean	*1 Owner Load* *Naturals \$1.6725 **Schedule Take up**
Lot 11	64 head Steers	Total Weight	48,000-50,000
	33L1, 40 M1, 1 L&M2 64 Black Average Weight: 775 Flesh: 90% 5s, 10% 6s Feed: 5 lbs grain, free choice hay and pasture Sires: Angus, Angus X, Balancer Lin Jones of Berk Mar Farm : 434 581-3997, 434 981-5424 Wt. Conditions: Loaded FOB the farm, 12-mile haul to Mead-Westvaco Scales North of Dillwyn. 2% Shrink.	Range: 710-860, 1 @900 Clean	*1 Owner Load* \$1.4975 **NO August 7,8,9 take up**
Lot 12	62 head Steers	Total Weight	48,000-50,000
	33 L1, 28 M1, 1 L&M2 59 Black, 3 BWF Average Weight: 790 Flesh: 100% 5s Feed: Ave. 8-10 lbs grain, free choice hay and pasture Sire: Angus, Balancer Brooklyn Road Farm : Manager Michael Randolph 434 547-3010 Wt. Conditions: Loaded FOB farm, 5-mile haul to Mead-Westvaco Scales North of Dillwyn. 2% Shrink.	Range: 740-870 Clean	\$1.4750 *1 Owner Load* **NO August 7,8,9 take up**

Lot 13	63 head Steers	Total Weight	48,000-50,000
	<p>41L1, 22 M1 57 Black, 3 BWF, 3 black-nose CX Average Weight: 790 Flesh: 70% 5s, 30% 6s Feed: 8 lbs grain, free choice hay and pasture Sires: Angus X, Balancer, Gelbvieh Wt. Conditions: 20/40-mile haul to the BARN weighed and loaded FOB the BARN.</p>	<p>Range: 720-880, 3@900 Clean</p>	<p>*Majority Morris Cattle \$1.4550 ** August 7 take up**</p>
Lot 14	61 head Steers	Total Weight	48,000-50,000
	<p>27 L1, 33 M1, 1 L&M2 57 Black, 4 BWF Average Weight: 810 Flesh: 80% 5s, 20% 6s Feed: 12 lbs grain, free choice hay and pasture Sires: Angus, Angus X Wt. Conditions: 40-mile haul to the BARN weighed and loaded FOB the BARN.</p>	<p>Range: 760-890, 3@920 Clean</p>	<p>\$1.4550 ** August 7 take up**</p>
Lot 15	58 head Steers	Total Weight	48,000-50,000
	<p>13 L1, 45 M1 43 Black, 13 BWF, 2 RED Average Weight: 850 Flesh: 80% 5s, 20% 6s Feed: 10 lbs grain, free choice hay and pasture Sires: Angus, Balancer Brett Stratton of Evergreen Farms: 434-610-4261 Wt. Conditions: 25-mile haul Lynchburg Livestock Market weighed and loaded FOB the market.</p>	<p>Range: 810-940 Clean, few 1s</p>	<p>*1 Owner Load *Naturals, except 4 With records \$1.6025 **Schedule Take up**</p>
Lot 16	55 head Steers	Total Weight	31,000-33,000
	<p>5 L1, 15 M1, 35 L&M2 43 Black, 9 BWF, 3 RWF Average Weight: 600 Flesh: 80% 4s, 20% 5s Feed: Ave. 8 lbs grain, free choice hay and pasture Sires: Angus, Angus X Crooked Creek Farms: Manager Rodney Womack 434-665-1929 Wt. Conditions: Loaded FOB farm, 12-mile haul to Rock Quarry, Charlotte. 2% Shrink</p>	<p>Range: 500-690 Clean few 1's</p>	<p>*1 Owner Load* **GAP Certified/Natural** \$1.7050 **No August 7,8,9 take-up**</p>

HEIFERS

Lot 17	49 head Heifers	Total Weight	26,000-28,000
<p>3 L1, 6 M1, 40 L&M2 48 Black, 1 BWF Average Weight: 560 Flesh: 70% 4s, 30% 5s Feed: Ave. 8 lbs grain, free choice hay and pasture Sires: Angus, Angus X</p>		<p style="text-align: right;">*1 Owner Load* **GAP Certified/Natural Range: 480-640 Clean few 1's \$1.5050</p>	
<p>Crooked Creek Farms: Manager Rodney Womack 434-665-1929 Wt. Conditions: Loaded FOB farm, 12-mile haul to Rock Quarry, Charlotte. 2% Shrink **No August 7,8,9 take-up**</p>			

Lot 18	94 head Heifers	Total Weight	48,000-50,000
<p>1 L1, 51 M1, 42 L&M2 90 Black, 3 BWF, 1 Black nose CX Average Weight: 530 Flesh: 70% 4s, 30% 5s Feed: Ave. 8 lbs grain, free choice hay and pasture Sires: Angus, Angus X</p>		<p style="text-align: right;">Majority Wilmoth, Sharps Creek Range: 470-590 Clean few 1's \$1.41</p>	
<p>Wt. Conditions: 40/60-mile haul to the BARN weighed and loaded FOB the BARN. ** August 9 take up**</p>			

Lot 19	84 head Heifers	Total Weight	48,000-50,000
<p>1 L1, 59 M1, 24 L&M2 73 Black, 10 BWF, 1 black-nose CX Average Weight: 590 Flesh: 90% 5s, 10% 6s Feed: Ave 8-10lbs grain, free choice hay and pasture Sires: Angus, Angus X, Balancer</p>		<p style="text-align: right;">**4 Owner Load** Berk Mar, Creek View, Spring Dale, Sweet Springs Range: 510-660 Clean few 1s \$1.41</p>	
<p>Wt. Conditions: 40/60-mile haul to the BARN weighed and loaded FOB the BARN. ** August 9 take up**</p>			

<i>Lot 20</i>	<i>82 head Heifers</i>	<i>Total Weight</i>	<i>48,000-50,000</i>
	<p>13 L1, 39 M1, 30 L&M2 76 Black, 3 BWF, 2 SMK, 1 Black nosed CX Average Weight: 595 Range: 500-670 Flesh: 100% 5s Clean few 1s Feed: Ave. 5-12 lbs grain, free choice hay and pasture Sires: Angus, Balancer, Gelbvieh Wt. Conditions: 20/40-mile haul to the BARN weighed and loaded FOB the BARN.</p>		<p>\$1.4050</p> <p>**August 9 take up**</p>
<i>Lot 21</i>	<i>79 head Heifers</i>	<i>Total Weight</i>	<i>48,000-50,000</i>
	<p>15L1, 62 M1, 2 L&M2 76 Black, 2 BWF, 1 black nose CX Average Weight: 625 Range: 580-710 Flesh: 80% 5s, 20% 6s Clean Feed: Ave. 5-10 lbs grain, free choice hay and pasture Sires: Angus, Balancer</p> <p>Berk Mar Farm (50 Hd) and High Bridge Farm (29 Hd) Contact: Lin Jones of Berk Mar Farm: 434 581-3997, 434 981-5424 Wt. Conditions: 40-mile haul to the BARN weighed and loaded FOB the BARN.</p>		<p>\$1.38</p> <p>**Replacement Quality** *2 Owner Load*</p> <p>Majority Berk Mar</p> <p>**Schedule Take up**</p>
<i>Lot 22</i>	<i>76 head Heifers</i>	<i>Total Weight</i>	<i>48,000-50,000</i>
	<p>10L1, 63 M1, 3 L&M2 76 Black Average Weight: 645 Range: 560-720 Flesh: 10% 4s, 80% 5s, 10% 6s Clean few 1s Feed: Ave. 10 lbs grain, free choice hay and pasture Sires: Angus, Balancer</p> <p>Robert Womack of Woodville Farm: 434 547-9611 Wt. Conditions: Loaded FOB the Farm 10-mile haul to Taylor Motor Scales, Cumberland 2% Shrink</p>		<p>**Replacement Quality** *1 Owner Load</p> <p>\$1.34</p> <p>**NO August 7,8,9 take up**</p>



Lot 23	71 head Heifers	Total Weight	48,000-50,000
<p>4L1, 67 M1 59 Black, 11 BWF, 1 RED Average Weight: 695 Flesh: 90% 5s, 10% 6s Feed: Ave. 5-8 lbs grain, free choice hay and pasture Sires: Angus, Balancer</p>		<p>**Replacement Quality** 2 Owner Load Range: 650-770 Clean \$1.38</p>	
<p>Evergreen Farms and Creek View Farms: Contact: Brett Stratton 434-610-4261 Wt. Conditions: 25-mile haul Lynchburg Livestock Market weighed and loaded FOB the market.</p>		<p>**Schedule Take up**</p>	

Lot 24	68 head Heifers	Total Weight	48,000-50,000
<p>57 M1, 11 L&M2 59 Black, 8 BWF, 1 RWF Average Weight: 725 Flesh: 100% 5s Feed: Ave. 8-10 lbs grain, free choice hay and pasture Sire: Angus, Angus X</p>		<p>**Replacement Quality** *1 owner load* Range: 640-830, 3 @ 900 Clean \$1.3325</p>	
<p>Brooklyn Road Farm: Manager Michael Randolph 434 547-3010 Wt. Conditions: Loaded FOB farm, 5-mile haul to Mead-Westvaco Scales North of Dillwyn. 2% Shrink.</p>		<p>**NO August 7,8,9 take up**</p>	



Lot 25	30 head Heifers	Total Weight	20,000-22,000
<p>16 L1, 13 M1, 1 L&M2 26 Black, 1 BWF, 3 Black nosed CX Average Weight: 720 Flesh: 80% 5s, 20% 6s Feed: Ave. 5-12 lbs grain, free choice hay and pasture Sires: Angus, Balancer, Gelbvieh</p>		<p>*Replacement Quality* Half load Range: 680-820 Clean few 1s \$1.2425 *Majority Morris Cattle</p>	
<p>Wt. Conditions: 20/40-mile haul to the BARN weighed and loaded FOB the BARN.</p>		<p>**August 9 take up**</p>	