

1,705,956.88

8.4.14

# Buckingham Cattlemen's Association Weaned Feeder Calf Sale

Virginia Quality Assured Purple Tag Certified

Home bred and raised calves, intensive genetic program with growth bulls,  
birthdates provided

Videos of Sale Cattle by Producer available at [www.buckinghamcattlemensassociation.org](http://www.buckinghamcattlemensassociation.org)

Calves born between September 1 and December 31, 2013

Tel-O-Auction, 6:00 PM

August 4, 2014

Obtain a bidder number from the Virginia Cattlemen's Association  
at (540) 992-1009, Tel-O-Auction: 1-888-291-0312, Code: 9410759#

### Health Program:

All calves Double Vaccinated with Zoetis Animal Health products:  
Bovi-Shield Gold 5/One Shot (Modified Live) for IBR, PI3, BVD  
7-Way Clostridal (Ultrabac 7)

All Producers are BQA Certified

Stag Guarantee: Any steer found to be a stag within 90 days of the delivery date, the buyer will be  
refunded \$250

The majority of calves grading L are on the lower 3<sup>rd</sup> of the grade.

<b>Lot 1</b>	<b>87 head Steers</b>	<b>Total Weight</b>	<b>50,025</b> <del>49,960</del>
--------------	-----------------------	---------------------	------------------------------------

11 L1, 64 M1, 12 L&M2  
83 Black, 4 BWF  
Average Weight: 575  
Flesh: 4 and 5

Range: 470-670  
Clean few 1's

Few old eye spots

Feed: 10 lbs grain, free choice  
hay and pasture

Sires: Angus, Angus X, Balancer

Randy Wilmoth of Wilmoth Brothers: 434 989-1381

Wt. Conditions: Loaded FOB farm, 17-mile haul to Mead-Westvaco

Scales North of Dillwyn. 2% Shrink.

\*\*NO August 8 take up\*\*

Price: \$267,000

Buyer #: 95

<b>Lot 2</b>	<b>84 head Steers</b>	<b>Total Weight</b>	<b>49,560</b>
--------------	-----------------------	---------------------	---------------

16 L1, 55 M1, 13 L&M2  
83 Black, 1 BWF  
Average Weight: 590  
Flesh: 5

Range: 550-635  
Clean

Feed: Ave. 8-10 lbs grain, free  
choice hay and pasture

Sires: Angus, Balancer

Wt. Conditions: 50 mile haul to Lynchburg Livestock Market

Sorted, weighed and loaded FOB the market.

\*\*Friday Aug. 8 take up\*\*

Price: 268.25

# 89

266,337.9

132-2932  
133-566.75

132-944.7

<b>Lot 3</b>	<b>63 head Steers</b>	<b>Total Weight</b>	<b>32,130</b>
88,036.2 <del>134,473.95</del> <del>130,643.3</del>	3 L1, 27 M1, 34 L&M2 60 Black, 4 BWF Average Weight: 510 Flesh: 5 Feed: some grain, free choice hay and pasture, some silage Sires: Angus, Angus X, Balancer Wt. Conditions: 50 mile haul to Lynchburg Livestock Market Sorted, weighed and loaded FOB the market.	Range: 455-545 Clean	Price: 274. <sup>00</sup> # 45 **Friday Aug. 8 Take up**

<b>Lot 4</b>	<b>78 head Steers</b>	<b>Total Weight</b>	<b>49,530</b>
134,473.95	7 L1, 65 M1, 6 L&M2 75 Black, 2 BWF, black nose CX Average Weight: 635 Flesh: 5 to 5+ Feed: Berk Mar: some grain, Free Choice hay and pasture Sires: Angus, Balancer Wt. Conditions: 50 mile haul to Lynchburg Livestock Market weighed and loaded FOB the market *3 Producer (Berk Mar, Evergreen, Stratton/Martin)	Range: 565-675 Clean few 1's Evergreen: 10 lbs grain, free choice hay and pasture Contact Brett Stratton 434 610-7625	Price: 271.50 # 88 **NO August 8 take up**

<b>Lot 5</b>	<b>74 head Steers</b>	<b>Total Weight</b>	<b>49,580</b>
130,643.3	13 L1, 53 M1, 8 L&M2 72 Black, 1 BWF, 1 Smoke Average Weight: 670 Flesh: 5 Feed: Ave. 8 lbs grain, free choice hay and pasture Sires: Angus, Balancer Wt. Conditions: 50 mile haul to Lynchburg Livestock Market Sorted, weighed and loaded FOB the market.	Range: 640-690 Clean few 1's	Price: <del>263</del> 263.50 # 45 **Friday Aug. 8 take up**

<b>Lot 6</b>	<b>73 head Steers</b>	<b>Total Weight</b>	<b>49,275</b>
132,057	19 L1, 54 M1 73 Black Average Weight: 675 Flesh: 5 and 6 Feed: 5 lbs corn silage, 10 lbs grain, free choice hay and pasture Sires: Angus, Balancer  Robert Womack of Woodville Farm: 434 547-9611 Wt. Conditions: Loaded FOB Farm 10 mile haul to Taylor Motor Scales, Cumberland 2% Shrink	Range: 575-775 Clean few 1's	Price: 268. <sup>00</sup> # 5 **NO August 8 take up**

485,210.45



<b>Lot 7</b>	<b>69 head Steers</b>	<b>Total Weight</b>	<b>49,680</b>
	19L1, 48 M1, 2 L&M2 64 Black, 5 BWF Average Weight: 720 Flesh: 5 Feed: Ave. 8-10 lbs grain, free choice hay and pasture Sires: Angus, Balancer, Gelbvieh Wt. Conditions: 50 mile haul to Lynchburg Livestock Market Sorted, weighed and loaded FOB the market.	Range: 695-760 Clean few 1's	<i>Price: 260</i> <i>#45</i> <b>**Friday Aug. 8 take up**</b>

*129,168*

<b>Lot 8</b>	<b>68 head Steers</b>	<b>Total Weight</b>	<b>49,640</b>
	32L1, 35 M1, 1 L&M2 58 Black, 6 BWF, 1 Smoke, 2 black-nosed CX, 1 Red Average Weight: 730 Flesh: 5 + Feed: 10-12 lbs grain, free choice hay and pasture Sires: Angus, Angus x, Balancer 2 Producer: Evergreen Farms and Stratton/Martin Wt. Conditions: 25 mile haul Lynchburg Livestock Market weighed and loaded FOB the market.	Range: 680-795 Clean few 1's Contact: Brett Stratton 434 610-7625	<i>Price: 263</i> <i>#32</i> <b>**NO August 8 take up**</b>

*130,553.2*

<b>Lot 9</b>	<b>67 head Steers</b>	<b>Total Weight</b>	<b>49,915</b>
	17L1, 48 M1, 2 L&M2 61 Black, 3 BWF, 2 Smoke, 1 black-nosed CX Average Weight: 745 Flesh: 5 Feed: some grain, free choice hay and pasture Sires: Angus, Balancer Lin Jones of Berk Mar Farm: 434 581-3997, 434 981-5424 Wt. Conditions: Loaded FOB farm, 12-mile haul to Mead-Westvaco Scales North of Dillwyn. 2% Shrink.	Range: 680-870 Clean, few 1s	<i>Price: 258.50</i> <i>#5</i> <b>**NO August 8 take up**</b>

*129,030.275*

<b>Lot 10</b>	<b>60 head Steers</b>	<b>Total Weight</b>	<b>49,200</b>
	33L1, 27 M1 56 Black, 4 BWF Average Weight: 820 Flesh: 5 and 6 Feed: 8-10 lbs grain, free choice hay and pasture Sires: Angus, Balancer	Predominantly AI sired, In Focus and Final Product Range: 760-915, 2 @ 945 Clean	<i>Price: 235.25</i> <i>#5</i> <b>**Friday Aug. 8 take up**</b>
	Wt. Conditions: 50 mile haul to Lynchburg Livestock Market Sorted, weighed and loaded FOB the market.		

*115,743*

*504,494.98*

<b>Lot 11</b>	<b>60 head Steers</b>	<b>Total Weight</b>	<b>49,500</b>
116,943.15	23L1, 37 M1 55 Black, 5 BWF Average Weight: 825 Flesh: 5 and 6 Feed: 10-12 lbs grain, free choice hay and pasture Sires: Angus, Balancer	Predominantly AI sired Range: 760-900 Clean	Price: 236.25
	Brett Stratton of Evergreen Farms: 434 610-7625 Wt. Conditions: 25 mile haul Lynchburg Livestock Market weighed and loaded FOB the market.	#5	**NO August 8 take up**

**HEIFERS**

**Heifer Guarantee:** If a Buyer purchases a heifer that happens to be bred, the producer agrees to refund \$300 to the purchaser. This is subject to a veterinarian's certification that the heifer is pregnant and the returned ear tag verifying the identification and farm of origin.

<b>Lot 12</b>	<b>87 head Heifers</b>	<b>Total Weight</b>	<b>45,240</b>
106,540.2	13 L1, 36 M1, 37 L&M2, 1 L2 83 Black, 4 BWF Average Weight: 520 Flesh: 4 to 5 Feed: some grain, free choice hay and pasture, some silage Sires: Angus, Angus X, Balancer	Range: 450-555 Clean few 1s	Price: 235.50 #28
	Wt. Conditions: 50 mile haul to Lynchburg Livestock Market Sorted, weighed and loaded FOB the market.		**Friday Aug. 8 take up**

<b>Lot 13</b>	<b>81 head Heifers</b>	<b>Total Weight</b>	<b>48,600</b>
116,640	27L1, 41 M1, 13 L&M2 79 Black, 1 BWF, 1 Smoke Average Weight: 600 Flesh: 5 Feed: Berk Mar: some grain, Free Choice hay and pasture Sires: Angus, Balancer	**Replacement Quality** Range: 555-650 Clean few 1s Evergreen: 10 lbs grain, free choice Stratton/Martin hay and pasture Contact Brett Stratton 434 610-7625	*No Free Martins Price: 240. #10
	Wt. Conditions: 50 mile haul to Lynchburg Livestock Market weighed and loaded FOB the market *3 Producer (Berk Mar, Evergreen, Stratton/Martin)		**NO August 8 take up**

340123.95



Lot 14	74 head Heifers	Total Weight	46,620
<p>109,790!</p>	<p>16L1, 47 M1, 11 L&amp;M2            68 Black, 5 BWF, 1 Smoke            Average Weight: 630            Flesh: 5 and 6            Feed: Ave. 8 lbs grain, free            choice hay and pasture            Sires: Angus, Gelbvieh</p>	<p>Price <del>235</del> 235.50</p> <p>Range: 560-730            Clean few 1s</p>	<p># 10</p>
	<p>Wt. Conditions: 50 mile haul to Lynchburg Livestock Market            Sorted, weighed and loaded FOB the market. **Friday Aug. 8 take up**</p>		

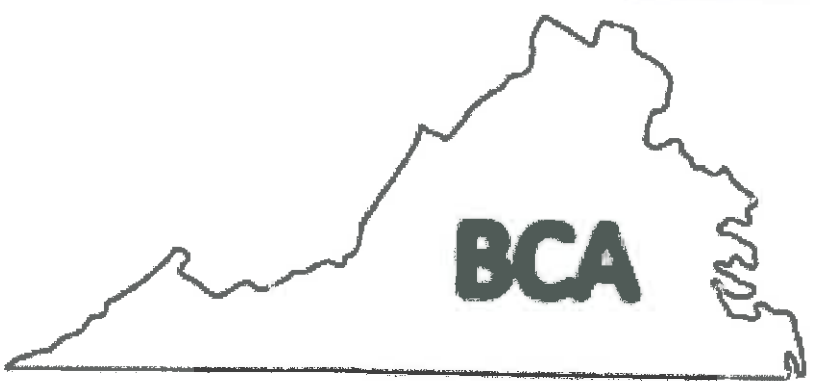
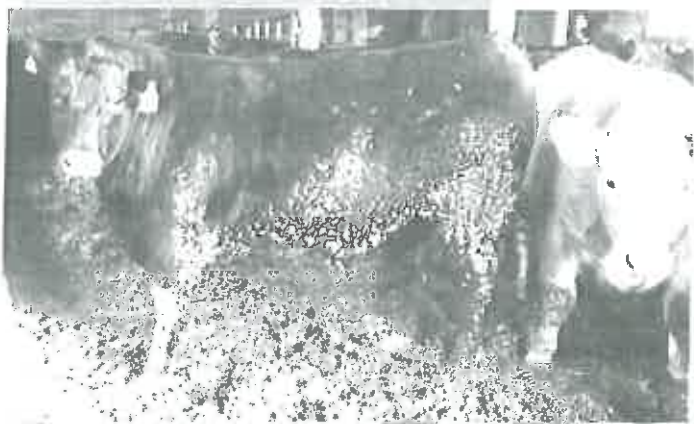


Photo  
Cred.

