

Buckingham Cattlemen's Association Weaned Feeder Calf Sale

Virginia Quality Assured Purple Tag Certified

****PICK UP LOCATION****

Buckingham Agricultural Resource Network (BARN)

11851 W. James Anderson Hwy, Buckingham, VA

Access Route 60 just west of Buckingham Courthouse via Route 24, 56, 20, and 15

Videos of Sale Cattle by Producer available at www.buckinghamcattlemensassociation.com

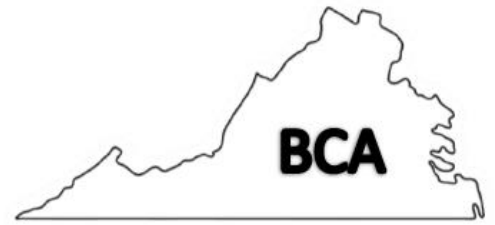
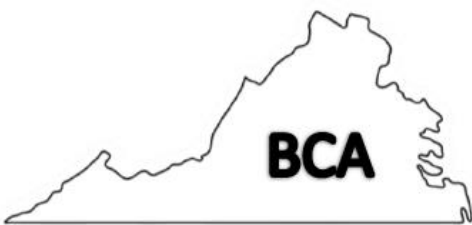
Home bred and raised calves, intensive genetic program for Docility and Growth

Tel-O-Auction, 6:00 PM

August 1, 2022

Obtain a bidder number and information from the Virginia Cattlemen's Association at (540) 992-1009

Tel-O-Auction number: 1(800) 309-2350 * Code: 4505513#



Birthdates provided, September 1 and December 31, 2021

*Few in August

September and early October calves AI sired by:



Sire	Yearling wt	Docility	Carcass weight	Marbling	Ribeye area	fat
Sure Fire	+106	+27	+47	+1.31	+.71	+0.03
Tahoe	+134	+23	+52	+0.88	+.88	+0.013
Playbook	+103	+26	+44	+0.46	+.37	+0.037
Impact's Fortune	+113	+14	+19	+.08	+.65	-0.08

GRADING INFORMATION

Feeder Cattle

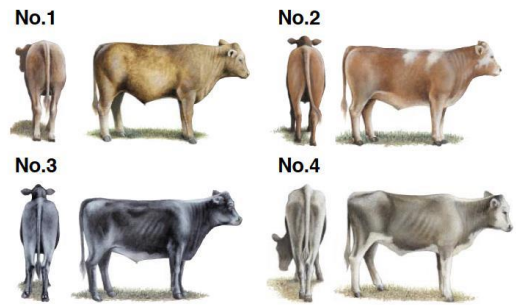
Official U.S. Grades

Frame Size



Large and medium frame pictures depict minimum grade requirements. The small frame picture represents an animal typical of the grade.

Thickness



No. 1, No. 2 and No. 3 thickness pictures depict minimum grade requirements. The No. 4 picture represents an animal typical of the grade.

Copies of the Official United States Standards for Feeder Cattle are available upon request

USDA United States Department of Agriculture, Agricultural Marketing Service, Livestock and Seed Program, Washington D.C. 20250, October 2008

Large framed cattle are those that are expected to weigh over 1250lbs. when their external fat is approximately 0.5 inches at the 12th rib where beef carcasses are “ribbed” for grading purposes. The 0.5-inch target is used in the USDA standards as a reasonable live animal predictor for a calf’s ability to grade choice or higher.

GRADE	STEER (LBS)	HEIFER (LBS)
LARGE (L)	1250 OR greater	1150 or greater
MEDIUM (M)	1100 TO 1249	1000 TO 1149

Stag Guarantee: Any steer found to be a stag within 90 days of the delivery date, buyer will be refunded \$250

Heifer Guarantee: If a Buyer purchases a heifer that happens to be bred, the producer agrees to refund \$300 to the purchaser. This is subject to a veterinarian's certification that the heifer is pregnant and the returned ear tag verifying the identification and farm of origin.

*Weight estimated for Aug. 3-5 ship date. Loads held longer, buyer will be responsible for additional weight.

Health Program:

All calves Double Vaccinated with Zoetis Animal Health products:

Bovi-Shield Gold 5/One Shot (Modified Live) for IBR, PI3, BVD

7-Way Clostridial (Ultrachoice) and Dewormed

No ACTIVE pink eye will be shipped, some small spots may be present on previously treated animals

All Producers are BQA Certified

Contact: Jennifer Ligon (434) 607-5814 or Roger Morris (434) 315-4294

VDACS Grader: Scott Talley (540) 290-1311

STEERS

Lot 1	51 head Steers	Total Weight	27,000-28,000
\$2.02	<p>10 L1, 26 M1, 15 L&M2 51 Black</p> <p>Average Weight: 535 Range: 480-600 Flesh: 10% 4s, 90% 5s Clean</p> <p>Feed: Ave. 8-10 lbs 16% grain, free choice hay, pasture</p> <p>Sires: Angus, Balancer</p> <p>Shannon Tillman of Inglewood Farms: 434-326-2939</p> <p>Wt. Conditions: Loaded FOB the farm, 2-mile haul to Campbell's Woodyard in Piney River. 2% Shrink.</p>		
			<p>*1 Owner load</p> <p>*Home Grown by Heroes certified</p> <p>*Naturals</p> <p>Age Verification BQA Verified NoHormoneTreatedCattle</p> <p>** Schedule Take-up**</p>
Lot 2	85 head Steers	Total Weight	48,000-50,000
\$2.03	<p>2 L1, 56 M1, 27 L&M2 82 Black, 2 BWF, 1 SMK</p> <p>Average Weight: 570 Range: 500-620 Flesh: 20% 4s, 80% 5s Clean, few 1s</p> <p>Feed: Ave. 8-10 lbs grain, free choice hay and pasture</p> <p>Sires: Angus, Angus X</p> <p>Wt. Conditions: 30-mile haul to the BARN weighed and loaded FOB the BARN.</p>		
			<p>** August 4 take up **</p>
Lot 3	80 head Steers	Total Weight	48,000-50,000
\$2.00	<p>3 L1, 63 M1, 14 L&M2 75 Black, 3 BWF, 2 Black-nose CX</p> <p>Average Weight: 610 Range: 520-650 Flesh: 10 % 4s and 90% 5s Clean, few 1s</p> <p>Feed: Ave. 5-10 lbs grain, free choice hay and pasture</p> <p>Sires: Angus, Angus X</p> <p>Wt. Conditions: 30-40mile haul to the BARN weighed and loaded FOB the BARN.</p>		
			<p>*Uniform group of 3-owner cattle</p> <p>Sharps Creek, Spring Hope, Sweet Springs</p> <p>** August 4 take up**</p>
Lot 4	78 head Steers	Total Weight	*48,000-50,000
\$1.93	<p>4 L1, 44 M1, 30 L&M2 62 Black, 16 BWF</p> <p>Average Weight: 625 Range: 530-690 Flesh: 10% 4s, 90% 5s Clean, few 1s</p> <p>Feed: 10 lbs corn/gluten/soyhulls, corn silage, wheat hay and pasture</p> <p>Sire: Angus, Angus X</p> <p>Clark Poindexter of Grind N Stone Farm: 434-660-7530</p> <p>Wt. Conditions: Loaded FOB farm, 20-mile haul to Rock Quarry, Charlotte. 2% Shrink</p>		
			<p>*1 Owner Load*</p> <p>**No August 3,4,5 take-up**</p>

Lot 5	74 head Steers	Total Weight	48,000-50,000
\$2.03	12 L1, 53 M1, 9 L&M2		*1 Owner Load*
	71 Black, 3 BWF Average Weight: 660 Flesh: 40% 4s, 60% 5s Feed: Ave. 5-10 lbs grain, free choice hay and pasture Sires: Angus, Angus X Randy Wilmoth of Wilmoth Farms : 434 989-1381 Wt. Conditions: Loaded FOB the farm, 25-mile haul to CAT Scales at Zions Crossroads. 2% Shrink.	Range: 550-700 Clean few 1's	** Schedule Take up**
Lot 6	68 head Steers	Total Weight	45,000-47,000
\$2.0250	6 L1, 57 M1, 5 L&M 2		*1 Owner Load*
	68 Black Average Weight: 665 Flesh: 100% 5s Feed: Ave. 5 lbs grain, free choice hay and pasture Sires: Angus X, Balancer Lin Jones of Berk Mar Farm : 434 581-3997, 434 981-5424 Wt. Conditions: Loaded FOB the farm, 25-mile haul to CAT Scales at Zions Crossroads. 2% Shrink.	Range: 550-740 Clean, few 1s	**Schedule Take up**
Lot 7	72 head Steers	Total Weight	48,000-50,000
\$1.95	6 L1, 56 M1, 10 L&M2		
	70 Black, 2 BWF Average Weight: 680 Flesh: 10% 4s, 90% 5s Feed: 8-10 lbs grain, free choice hay and pasture Sires: Angus, Angus X Wt. Conditions: 30-mile haul to the BARN weighed and loaded FOB the BARN.	Range: 630-735 Clean, few 1s	**August 4 take up**
Lot 8	72 head Steers	Total Weight	49,000-50,000
\$1.89	2 L1, 63 M1, 7 L&M2		*Creek View Farm + 16 matching cattle from co-managed farm
	65 Black, 4 BWF, 1 SMK, 2 Black-nose CX Average Weight: 710 Flesh: 90% 5s, 10%6s Feed: Ave 10lbs grain, free choice hay and pasture Sires: Angus X, Balancer Bob Martin of Creek View Farms : 434-610-0411 Wt. Conditions: 30-mile haul Lynchburg Livestock Market weighed and loaded FOB the market.	Range: 570-790 Clean few 1's	*NATURALS **Schedule Take up**

Lot 9	67 head Steers	Total Weight	47,000-49,000
\$1.84	4 L1, 59 M1, 4 L&M2 66 Black, 1 BWF Average Weight: 710 Flesh: 10% 4s, 90% 5s Feed: 5 lbs grain, free choice hay and pasture Sires: Angus, Angus X Wt. Conditions: 10-20-mile haul to the BARN weighed and loaded FOB the BARN.	Range: 600-800 Clean, few 1s	2-Owner Load *Whetstone Farm + 8 matching Wilmoth cattle **August 4 take up**
Lot 10	66 head Steers	Total Weight	49,000-50,000
\$1.88	66 M1 55 Black, 11 BWF Average Weight: 750 Flesh: 90% 5s, 10% 6s Feed: 10 lbs grain, free choice hay and pasture Sires: Angus X, Balancer Brett Stratton of Evergreen Farms : 434-610-7625 Wt. Conditions: 25-mile haul Lynchburg Livestock Market weighed and loaded FOB the market.	Range: 650-820 Clean, few 1s	*1 Owner Load* **Schedule Take up**
Lot 11	64 head Steers	Total Weight	48,000-50,000
\$1.85	2L1, 60 M1, 2 L&M 2s 64 Black Average Weight: 765 Flesh: 90% 5s, 10% 6s Feed: 10 lbs grain, free choice hay and pasture Sires: Angus X, Balancer Robert Womack of Woodville Farm : 434 547-9611 Wt. Conditions: Loaded FOB the Farm 10-mile haul to Taylor Motor Scales, Cumberland 2% Shrink	Range: 700-835 Clean	*1 Owner Load* *NATURALS **NO August 3,4 take up**
Lot 12	61 head Steers	Total Weight	47,000-49,000
\$1.80	5 L1, 53 M1, 3 L&M2 56 Black, 4 BWF, 1 black-nose CX Average Weight: 775 Flesh: 10% 4s, 90% 5s Feed: 5-10lbs grain, free choice hay and pasture Sire: Angus, Angus X Wt. Conditions: 30-40mile haul to the BARN weighed and loaded FOB the BARN.	Range: 720-890, 3@ 920 Clean, few 1s	*Uniform group of 3-Owner cattle Sharps Creek, Spring Hope, Sweet Springs **August 3 take up**

Lot 13	62 head Steers	Total Weight	48,000-50,000
\$1.7950	37L1, 23 M1, 2 L&M 2's	Uniformly bred cattle CH Morris, C. Morris, K. Morris, K. Moyers	
	59 Black, 1 BWF, 2 Red Average Weight: 780 Flesh: 80% 5s, 20% 6s Feed: 12 lbs grain, free choice hay and pasture Sires: Angus X, Gelbvieh, Balancer Wt. Conditions: 20/60-mile haul to the BARN weighed and loaded FOB the BARN.	Range: 720-880, 3@950 Clean	*These steers will finish big! **August 3 take up**
Lot 14	63 head Steers	Total Weight	49,000-50,000
\$1.80	3 L1, 60 M1	*2 Owner Load* High Bridge Farm with 14 matching cattle from Wellwater	
	62 Black, 1 BWF Average Weight: 785 Flesh: 100% 5s Feed: 5-8 lbs grain, free choice hay and pasture Sires: Angus X, Balancer Todd Smith of High Bridge Farm: 434-390-7518 Wt. Conditions: 20-40-mile haul to the BARN weighed and loaded FOB the BARN.	Range: 720-890, 4@940 Clean	**Schedule Take up**
Lot 15	57 head Steers	Total Weight	45,000-47,000
\$1.835	11 L1, 46 M1	*1 Owner Load	
	57 Black Average Weight: 795 Flesh: 100% 5s Feed: 5 lbs grain, free choice hay and pasture Sires: Angus, Balancer Lin Jones of Berk Mar Farm: 434 581-3997, 434 981-5424 Wt. Conditions: Loaded FOB the farm, 25-mile haul to CAT Scales at Zions Crossroads. 2% Shrink.	Range: 760-880 Clean, few 1s	**Schedule Take up**
Lot 16	60 head Steers	Total Weight	49,000-50,000
\$1.715	9 L1, 51 M1		
	55 Black, 5 BWF Average Weight: 820 Flesh: 95% 5s, 5% 6s Feed: Ave. 5-10 lbs grain, free choice hay and pasture Sires: Angus, Angus X Wt. Conditions: 20/40-mile haul to the BARN weighed and loaded FOB the BARN.	Range: 760-890, 3@950 Clean	**August 3 take up**

Lot 17	57 head Steers	Total Weight	49,000-50,000
\$1.745	8 L1, 49 M1		*1 Owner Load
	52 Black, 4 BWF, 1 RED Average Weight: 870 Flesh: 90% 5s, 10%6s Feed: 10 lbs grain, free choice hay and pasture Sires: Angus, Balancer Brett Stratton of Evergreen Farms : 434-610-7625 Wt. Conditions: 25-mile haul Lynchburg Livestock Market weighed and loaded FOB the market.	Range: 800-910 Clean, few 1s	**Schedule Take up**

HEIFERS



Lot 18	90 head Heifers	Total Weight	46,000-48,000
\$1.69	3 L1, 40 M1, 47 L&M 2s		½ are Inglewood Farm Natural certified heifers
	88 Black, 2 BWF Average Weight: 520 Flesh: 40% 4s, 60% 5s Feed: Ave. 8-10 lbs grain, free choice hay and pasture Sires: Angus, Angus X, Balancer Wt. Conditions: 20/40-mile haul to the BARN weighed and loaded FOB the BARN.	Range: 460-560, 1 @600 Clean few 1's	*NO IMPLANTS **August 5 take up**

Lot 19	83 head Heifers	Total Weight	48,000-50,000
\$1.76	1 L1, 49 M1, 33 L&M2		
	77 Black, 6 BWF Average Weight: 580 Flesh: 40% 4s, 60% 5s Feed: Ave. 5-10 lbs grain, free choice hay and pasture, some silage Sires: Angus X, Balancer Wt. Conditions: 40/60-mile haul to the BARN weighed and loaded FOB the BARN.	Range: 550-610 Clean few 1's	** August 5 take up**

Lot 20	82 head Heifers	Total Weight	48,000-50,000
\$1.775	<p>1 L1, 48 M1, 33 L&M2 76 Black, 5 BWF, 1 RWF Average Weight: 590 Flesh: 40% 4s, 60% 5s Feed: Ave 5-10lbs grain, free choice hay and pasture Sires: Angus, Angus X, Balancer Wt. Conditions: 30-mile haul to the BARN weighed and loaded FOB the BARN.</p>	<p>Sharps Creek, Spring Hope, and Wilmoth Range: 550-700 Clean few 1s</p>	<p>*3 owner load *NO IMPLANTS **August 5 take up**</p>
Lot 21	76 head Heifers	Total Weight	49,000-50,000
\$1.67	<p>3 L1, 45 M1, 28 L&M2 71 Black, 1 BWF, 4 Black nosed CX Average Weight: 645 Flesh: 90%5s, 10%6s Feed: Ave. 10 lbs grain, free choice hay and pasture Sires: Angus X, Balancer Bob Martin of Creek View Farms: 434-610-0411 Wt. Conditions: 30-mile haul Lynchburg Livestock Market weighed and loaded FOB the market.</p>	<p>*Creek View + 18 matching cattle from co-managed farm Range: 590-700 Clean few 1s</p>	<p>*Natural **Schedule Take up**</p>
Lot 22	72 head Heifers	Total Weight	48,000-50,000
\$1.675	<p>2 L1, 58 M1, 12 L&M2 66 Black, 6 BWF Average Weight: 670 Flesh: 10% 4s, 90% 5s Feed: 10 lbs corn/gluten/soyhulls, corn silage, wheat hay and pasture Sires: Angus X Clark Poindexter of Grind N Stone Farm: 434-660-7530 Wt. Conditions: Loaded FOB the farm, 20-mile haul to Rock Quarry, Charlotte. 2% Shrink</p>	<p>Range: 650-800 Clean, few 1s</p>	<p>*1 Owner Load* *NO IMPLANTS **Schedule Take-up**</p>
Lot 23	73 head Heifers	Total Weight	48,500-50,000
\$1.70	<p>4 L1, 67 M1, 2 L&M2 72 Black, 1BWF Average Weight: 670 Flesh: 90% 5s, 10% 6s Feed: Ave. 5-10 lbs grain, free choice hay and pasture Sires: Angus X, Balancer Evergreen Farms and Berk Mar Farm Contact: Brett Stratton 434-610-7625. Wt. Conditions: 30-mile haul to the BARN weighed and loaded FOB the BARN.</p>	<p>Range: 560-750 Clean, few 1s</p>	<p>*2 Owner Load *Naturals, 3 treated **No August 3,4,5 Take-up**</p>

Lot 24	72 head Heifers	Total Weight	48,000-50,000
\$1.645	3 L1, 55 M1, 14 L&M 2s 70 Black, 2 BWF Average Weight: 685 Flesh: 80% 5s, 20% 6s Feed: Ave. 5-10 lbs grain, free choice hay and pasture Sires: Angus X, Balancer Wt. Conditions: 20/40-mile haul to the BARN weighed and loaded FOB the BARN.	Range: 650-800 Clean	**August 5 take up**
Lot 25	69 head Heifers	Total Weight	47,000-49,000
\$1.675	1 L1, 62 M1, 6 L&M2 65 Black, 3 BWF, 1 Black-nose CX Average Weight: 685 Flesh: 5% 4s, 95% 5s Feed: Ave. 5-8 lbs grain, free choice hay and pasture Sire: Angus X Jim Pugh of Sweet Springs Farm: 434-610-7265 Wt. Conditions: Loaded FOB farm, ¼ mile weigh at Meherrin scales, Charlotte. 2% Shrink	Range: 600-800 Clean	*1 owner load* *NO IMPLANTS **Schedule Take-up**
Lot 26	73 head Heifers	Total Weight	49,000-50,000
\$1.68	1 L1, 62 M1, 10 L&M2 73 Black Average Weight: 695 Flesh: 90% 5s, 10% 6s Feed: Ave. 10 lbs grain, free choice hay and pasture Sires: Angus X, Balancer Robert Womack of Woodville Farm: 434 547-9611 Wt. Conditions: Loaded FOB the Farm 10-mile haul to Taylor Motor Scales, Cumberland 2% Shrink	Range: 580-750 Clean few 1s	*1 owner load* *Naturals **Schedule Take-up**
Lot 27	69 head Heifers	Total Weight	48,000-50,000
\$1.645	2 L1, 64 M1, 3 L&M 2s 66 Black, 3 BWF Average Weight: 705 Flesh: 80% 5s, 20% 6s Feed: Ave. 5-10 lbs grain, free choice hay and pasture Sires: Angus X, Balancer Wt. Conditions: 20/40-mile haul to the BARN weighed and loaded FOB the BARN.	Range: 590-660 Clean	*NO IMPLANTS **August 5 take up**

2022 BCA Annual VQA Feeder Calf Sale
Please visit our website for additional sale information
www.buckinghamcattlemensassociation.com

1. Berk-Mar Farm Heifers <https://youtu.be/mWTE-NPIyXI>
2. Berk-Mar Farm Steers <https://youtu.be/x78Kw0lgKfk>
3. C.H. Morris & Sons, LLC <https://youtu.be/S-y6NtakG5g>
4. Charles Morris <https://youtu.be/26wYu24Nk-w>
5. Creekview Farm https://youtu.be/d2mT-i3_JGY
6. Crews Family Farm <https://youtu.be/d1VbuuleuqE>
7. Crooked Creek <https://youtu.be/fvI0KZ7IIVY>
8. Duke Hanley <https://youtu.be/XyBY6APe16U>
9. Evergreen Farm Heifers <https://youtu.be/A6o8htjDA9k>
10. Evergreen Farm Steers <https://youtu.be/t7fhPPwA2L8>
11. Grind-N- Stone Heifers <https://youtu.be/55718Zg02Xk>
12. Grind-N-Stone Steers <https://youtu.be/3GcOxtLNBh0>
13. Harris <https://youtu.be/q8tCRfJnK1Y>
14. High Bridge Heifers <https://youtu.be/aLHDikcwS6U>
15. High Bridge Steers <https://youtu.be/8Wn8yZJSVDA>
16. Inglewood Farm <https://youtu.be/XnPJI-tmKeE>
17. Kenny Morris <https://youtu.be/UmBamyvF7jU>
18. Mt. Rush Farm <https://youtu.be/8-AB71sJ2rA>
19. Oak Grove Farm <https://youtu.be/L1SJH8QCenA>
20. RHHS <https://youtu.be/Razv4mVBNsg>
21. Rocky Hill Farm <https://youtu.be/tyE4JRb9J0I>
22. Sharps Creek Ranch <https://youtu.be/nFJDbyujG0E>
23. Spring Hope Farm <https://youtu.be/Y-Z2MfCr5s8>
24. Sweet Springs Farm <https://youtu.be/aoGagh-5T1w>
25. Thompson Family Farm https://youtu.be/yj8JO_sR11Q
26. TOP Farm <https://youtu.be/cqSKJS9o88A>
27. Tranquility Farm <https://youtu.be/1hpMmDluQvE>
28. Twilight Farm <https://youtu.be/IRMiEwMQvzU>
29. Wellwater Entp Heifers <https://youtu.be/-3LZSX6bT-k>
30. Wellwater Entp Steers <https://youtu.be/t37LqZA5P0Y>
31. Whetstone Farm https://youtu.be/ysN48X_za-o
32. Wilmoth Farms https://youtu.be/CQp0_lb1dxY
33. Woodville Farm Heifers <https://youtu.be/YTL5j7C5ELs>
34. Woodville Farm Steers <https://youtu.be/bDddu5XSwIM>