

Buckingham Cattlemen's Association Weaned Feeder Calf Sale

Virginia Quality Assured Purple Tag Certified

****PICK UP LOCATION****

Buckingham Agricultural Resource Network (BARN)

11851 W. James Anderson Hwy, Buckingham, VA

Access Route 60 just west of Buckingham Courthouse via Route 24, 56, 20, and 15

Videos of Sale Cattle by Producer available at www.buckinghamcattlemensassociation.com

Home bred and raised calves, intensive genetic program for Docility and Growth

Tel-O-Auction, 6:00 PM

August 2, 2021

Obtain a bidder number and information from the Virginia Cattlemen's Association at (540) 992-1009

Tel-O-Auction number: 1(800) 309-2350 * Code: 4505513#



**[Videos of Producer Cattle
can be found here!](#)**



Birthdates provided, September 1 and December 31, 2020

*Few in late August

September and early October calves AI sired by:



Sire	Yearling wt	Docility	Carcass weight	Marbling	Ribeye area	fat
Sure Fire	+106	+27	+47	+1.31	+.71	+0.03
Resource	+132	+22	+52	-0.07	+1.06	-.003
Bonanza	+125	+16	+52	+.66	+.88	+0.012
Impact's Fortune	+113	+14	+19	+.08	+.65	-0.08

GRADING INFORMATION

Feeder Cattle

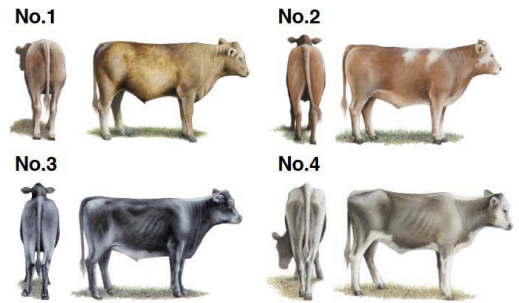
Official U.S. Grades

Frame Size



Large and medium frame pictures depict minimum grade requirements. The small frame picture represents an animal typical of the grade.

Thickness



No. 1, No. 2 and No. 3 thickness pictures depict minimum grade requirements. The No. 4 picture represents an animal typical of the grade.

Copies of the Official United States Standards for Feeder Cattle are available upon request

USDA United States Department of Agriculture, Agricultural Marketing Service, Livestock and Seed Program, Washington D.C. 20250, October 2009

Large framed cattle are those that are expected to weigh over 1250lbs. when their external fat is approximately 0.5 inches at the 12th rib where beef carcasses are “ribbed” for grading purposes. The 0.5-inch target is used in the USDA standards as a reasonable live animal predictor for a calf’s ability to grade choice or higher.

GRADE	STEER (LBS)	HEIFER (LBS)
LARGE (L)	1250 OR greater	1150 or greater
MEDIUM (M)	1100 TO 1249	1000 TO 1149

Stag Guarantee: Any steer found to be a stag within 90 days of the delivery date, buyer will be refunded \$250

Heifer Guarantee: If a Buyer purchases a heifer that happens to be bred, the producer agrees to refund \$300 to the purchaser. This is subject to a veterinarian's certification that the heifer is pregnant and the returned ear tag verifying the identification and farm of origin.

Health Program:

All calves Double Vaccinated with Zoetis Animal Health products:

Bovi-Shield Gold 5/One Shot (Modified Live) for IBR, PI3, BVD

7-Way Clostridial (Ultrabac 7/Ultrachoice) and Dewormed

No ACTIVE pink eye will be shipped, some small spots may be present on previously treated animals

All Producers are BQA Certified

Contact: Jennifer Ligon (434) 607-5814 or Roger Morris (434) 315-4294

VDACS Grader: Scott Talley (540) 290-1311

Lot 5	77 head Steers	Total Weight	48,000-50,000
	<p>4 L1, 63 M1, 10 L&M2 75 Black, 2 BWF Average Weight: 640 Flesh: 85% 5s, 15% 6s Feed: Ave. 5-10 lbs grain, free choice hay and pasture Sires: Angus, some Angus X Wt. Conditions: 30-mile haul to the BARN weighed and loaded FOB the BARN.</p>	<p>Range: 580-670 Clean few 1's</p>	<p>**August 5 take up**</p>
Lot 6	73 head Steers	Total Weight	47,500-49,000
	<p>4 L1, 63 M1, 6 L&M 2 72 Black, 1 BWF Average Weight: 655 Flesh: 100% 5s Feed: Ave. 5 lbs grain, free choice hay and pasture Sires: Angus X, Balancer Lin Jones of Berk Mar Farm: 434 581-3997, 434 981-5424 Wt. Conditions: Loaded FOB the farm, 25-mile haul to CAT Scales at Zions Crossroads. 2% Shrink.</p>	<p>Range: 550-730, 1 @500 Clean, few 1s</p>	<p>*1 Owner Load* **Schedule Take up**</p>
Lot 7	70 head Steers	Total Weight	49,000-50,000
	<p>12 L1, 55 M1, 3 L&M2 64 Black, 6 BWF Average Weight: 710 Flesh: 100% 5s Feed: 8-10 lbs grain, free choice hay and pasture Sires: Angus X, Balancer Randy Wilmoth of Wilmoth Farms: 434 989-1381 Wt. Conditions: Loaded FOB the farm, 25-mile haul to CAT Scales at Zions Crossroads. 2% Shrink.</p>	<p>Range: 650-790, 2@ 820 Clean, few 1s</p>	<p>*1 Owner Load* ** Schedule Take up**</p>
Lot 8	70 head Steers	Total Weight	49,000-50,000
	<p>5 L1, 63 M1, 2 L&M2 62 Black, 7 BWF, 1 Red Average Weight: 710 Flesh: 10% 4s, 90% 5s Feed: Ave 10lbs grain, free choice hay and pasture Sires: Angus X, Balancer Brett Stratton of Evergreen Farms: 434-610-7625 Wt. Conditions: 25-mile haul Lynchburg Livestock Market weighed and loaded FOB the market.</p>	<p>Range: 645-770 Clean few 1's</p>	<p>*1 Owner Load* *NO IMPLANTS* **Schedule Take up**</p>

Lot 9	67 head Steers	Total Weight	49,000-50,000
	2 L1, 64 M1, 1 L&M2 64 Black, 3 BWF Average Weight: 735 Flesh: 90% 5s, 10% 6s Feed: 8-10 lbs grain, free choice hay and pasture Sires: Angus, Angus X Wt. Conditions: 30-mile haul to the BARN weighed and loaded FOB the BARN.	Range: 680-780 Clean, few 1s	**August 4 take up **
Lot 10	68 head Steers	Total Weight	49,000-50,000
	14 L1, 49 M1, 5 L&M2 63 Black, 5 BWF Average Weight: 735 Flesh: 90% 5s, 10% 6s Feed: 10 lbs grain, free choice hay and pasture Sires: Angus X, Gelbvieh, Balancer Wt. Conditions: 30-mile haul to the BARN weighed and loaded FOB the BARN.	Range: 675-775 Clean	**August 4 take up **
Lot 11	68 head Steers	Total Weight	49,000-50,000
	2L1, 64 M1, 2 L&M 2s 68 Black Average Weight: 750 Flesh: 90% 5s, 10% 6s Feed: 10 lbs grain, free choice hay and pasture Sires: Angus, Balancer Robert Womack of Woodville Farm: 434 547-9611 Wt. Conditions: Loaded FOB the Farm 10-mile haul to Taylor Motor Scales, Cumberland 2% Shrink	Range: 660-800 Clean	*1 Owner Load* *NATURALS **NO August 4,5 take up**
Lot 12	66 head Steers	Total Weight	49,000-50,000
	10 L1, 50 M1, 6 L&M2 56 Black, 10 BWF Average Weight: 750 Flesh: 10% 4s, 90% 5s Feed: 12 lbs corn/gluten/soyhulls, corn silage, wheat hay and pasture Sire: Angus, Angus X Clark Poindexter of Grind N Stone Farm: 434-660-7530 Wt. Conditions: Loaded FOB farm, 20-mile haul to Rock Quarry, Charlotte. 2% Shrink	Range: 680-820, 2@ 880 Clean, few 1s	*1 Owner Load* **No August 4,5,6 take-up**

Lot 13	63 head Steers	Total Weight	49,000-50,000
	5L1, 58 M1 60 Black, 3 BWF Average Weight: 790 Flesh: 80% 5s, 20% 6s Feed: 12 lbs grain, free choice hay and pasture Sires: Angus X, Balancer Bob Martin of Creek View Farms : 434-610-0411 Wt. Conditions: 30-mile haul Lynchburg Livestock Market weighed and loaded FOB the market.	Range: 680-880, 1@950 Clean	*1 Owner Load* *NO IMPLANTS **Schedule Take up**
Lot 14	60 head Steers	Total Weight	47,500-49,000
	7 L1, 53 M1 59 Black, 1 black-nose CX Average Weight: 795 Flesh: 100% 5s Feed: 5 lbs grain, free choice hay and pasture Sires: Angus X, Balancer Lin Jones of Berk Mar Farm : 434 581-3997, 434 981-5424 Wt. Conditions: Loaded FOB the farm, 25-mile haul to CAT Scales at Zions Crossroads. 2% Shrink.	Range: 750-860, 1@ 900 Clean, few 1s	*1 Owner Load* **Schedule Take up**
Lot 15	60 head Steers	Total Weight	48,000-50,000
	60 M1 59 Black, 1 BWF Average Weight: 815 Flesh: 100% 5s Feed: 10 lbs grain, free choice hay and pasture Sires: Angus, Balancer Brett Stratton of Evergreen Farms : 434-610-7625 Wt. Conditions: 25-mile haul Lynchburg Livestock Market weighed and loaded FOB the market.	Range: 775-900 Clean, few 1s	*1 Owner Load *NO IMPLANTS **Schedule Take up**
Lot 16	59 head Steers	Total Weight	49,000-50,000
	9 L1, 50 M1 56 Black, 3 BWF Average Weight: 840 Flesh: 80% 5s, 20% 6s Feed: Ave. 8-10 lbs grain, free choice hay and pasture Sires: Angus, Angus X Wt. Conditions: 20/40-mile haul to the BARN weighed and loaded FOB the BARN.	Range: 820-935 Clean	**August 4 take up**

Lot 17	58 head Steers	Total Weight	49,000-50,000
	12 L1, 46 M1 55 Black, 2 BWF, 1 SMK Average Weight: 855 Flesh: 90% 5s, 10%6s Feed: 10 lbs grain, free choice hay and pasture Sires: Angus, Gelbvieh, Balancer Wt. Conditions: 20/40-mile haul to the BARN weighed and loaded FOB the BARN.	*Majority C H Morris and Woodville Range: 840-960, 2@ 1000 Clean, few 1s	**August 4 take up**

HEIFERS



Lot 18	93 head Heifers	Total Weight	48,000-50,000
	2 L1, 55 M1, 36 L&M 2s 89 Black, 2 BWF, 2 Black-nose CX Average Weight: 530 Flesh: 10% 4s, 90% 5s Feed: Ave. 8-10 lbs grain, free choice hay and pasture Sires: Angus, Angus X, Balancer Wt. Conditions: 20/40-mile haul to the BARN weighed and loaded FOB the BARN.	Range: 475-595 Clean few 1's	*NO IMPLANTS **August 6 take up**

Lot 19	94 head Heifers	Total Weight	49,000-50,000
	1 L1, 19 M1, 74 L&M2 86 Black, 8 BWF Average Weight: 525 Flesh: 40% 4s, 60% 5s Feed: Ave. 8-10 lbs grain, free choice hay and pasture, some silage Sires: Angus X, Balancer Wt. Conditions: 40/60-mile haul to the BARN weighed and loaded FOB the BARN.	Crooked Creek, Grind N Stone, Wilmoth Range: 440-600, 1 @ 650 Clean few 1's	*3 Owner Load *NO IMPLANTS ** August 9 take up**

Lot 20	86 head Heifers	Total Weight	49,000-50,000
	<p>1 L1, 65 M1, 20 L&M2 83 Black, 3 BWF Average Weight: 580 Flesh: 100% 5s Feed: Ave 8-10lbs grain, free choice hay and pasture Sires: Angus, Angus X, Balancer Wt. Conditions: 20/40-mile haul to the BARN weighed and loaded FOB the BARN.</p>	<p>Range: 520-630 Clean few 1s</p>	<p>*NO IMPLANTS **August 6 take up**</p>
Lot 21	77 head Heifers	Total Weight	49,000-50,000
	<p>3 L1, 46 M1, 28 L&M2 72 Black, 1 BWF, 4 Black nosed CX Average Weight: 645 Flesh: 100% 5s Feed: Ave. 5-12 lbs grain, free choice hay and pasture Sires: Angus X, Balancer Wt. Conditions: 20/40-mile haul to the BARN weighed and loaded FOB the BARN.</p>	<p>*Majority Sweet Spring and Wilmoth Range: 590-700 Clean few 1s</p>	<p>*NO IMPLANTS **August 6 take up**</p>
Lot 22	76 head Heifers	Total Weight	49,000-50,000
	<p>4 L1, 69 M1, 3 L&M2 75 Black, 1 BWF Average Weight: 655 Flesh: 100% 5s Feed: Ave. 5-10 lbs grain, free choice hay and pasture Sires: Angus X, Balancer</p>	<p>Range: 610-740 Clean</p>	<p>*2 Owner Load* *NO IMPLANTS One Freemartin</p>
	<p>Evergreen Farms and Berk Mar Farm Contact: Brett Stratton 434-610-7625. Wt. Conditions: 30-mile haul to the BARN weighed and loaded FOB the BARN. **No August 4,5,6 Take-up**</p>		
Lot 23	69 head Heifers	Total Weight	47,500-50,000
	<p>58 M1, 11 L&M2 69 Black Average Weight: 685 Flesh: 90% 5s, 10% 6s Feed: Ave. 12 lbs grain, free choice hay and pasture Sires: Angus X, Balancer</p>	<p>Range: 560-750 Clean, few 1s</p>	<p>*1 Owner Load *Naturals</p>
	<p>Robert Womack of Woodville Farm: 434 547-9611 Wt. Conditions: Loaded FOB the Farm 10-mile haul to Taylor Motor Scales, Cumberland 2% Shrink **Schedule Take-up**</p>		

Lot 24	71 head Heifers	Total Weight	49,000-50,000
	5 L1, 62 M1, 4 L&M 2s 65 Black, 3 BWF, 1 SMK, 2 Black nose CX Average Weight: 705 Flesh: 80% 5s, 20% 6s Feed: Ave. 12 lbs grain, free choice hay and pasture Sires: Angus X, Balancer Bob Martin (434-610-0411) of Creek View Farms and Todd Smith (434-390-7518) of High Bridge Farm Wt. Conditions: 40/60-mile haul to the BARN, weighed and loaded FOB the BARN.	Range: 670-790, 1 @830 Clean	**2 Owner Load *NO IMPLANTS **No August 4,5,6 Take-up**

Lot 25	70 head Heifers	Total Weight	48,000-50,000
	3 L1, 49 M1, 18 L&M2 61 Black, 9 BWF Average Weight: 710 Flesh: 100% 5s Feed: Ave. 8-10 lbs grain, free choice hay and pasture Sire: Angus X Clark Poindexter of Grind N Stone Farm: 434-660-7530 Wt. Conditions: Loaded FOB farm, 20-mile haul to Rock Quarry, Charlotte. 2% Shrink	Range: 650-790, 2 @ 830 Clean	*1 owner load* *NO IMPLANTS **Schedule Take-up**

Lot 26	69 head Heifers	Total Weight	49,000-50,000
	6 L1, 60 M1, 3 L&M2 67 Black, 2 BWF Average Weight: 735 Flesh: 90% 5s, 10% 6s Feed: Ave. 5-12 lbs grain, free choice hay and pasture Sires: Angus, Angus X, Balancer, Gelbvieh Wt. Conditions: 20/40-mile haul to the BARN weighed and loaded FOB the BARN.	Range: 680-810, 2 @870 Clean few 1s	*NO IMPLANTS **August 6 take up**

