

Buckingham Cattlemen's Association Weaned Feeder Calf Sale

Virginia Quality Assured Purple Tag Certified

****PICK UP LOCATION****

Buckingham Agricultural Resource Network (BARN)

11851 W. James Anderson Hwy, Buckingham, VA

Access Route 60 just west of Buckingham Courthouse via Route 24, 56, 20, and 15

Videos of Sale Cattle by Producer available at www.buckinghamcattlemensassociation.com

**Home bred and raised calves, intensive genetic program with growth bulls,
Tel-O-Auction, 6:00 PM
August 3, 2020**

**Obtain a bidder number and information from the Virginia Cattlemen's Association at (540) 992-1009
Tel-O-Auction number: 1(800) 309-2350 * Code: 4505513#**



Birthdates provided, September 1 and December 31, 2019

*Few in late August

September and early October calves AI sired by:



Sire	Yearling wt	Docility	Carcass weight	Marbling	Ribeye area	fat
Reserve	+92	+22	+26	+.76	+.77	-.038
Palmetto	+118	+28	+45	+1.02	+.72	+.007
Hickok	+112	+33	+45	+.68	+.75	+.029
Impact's Fortune	+113	+14	+19	+.08	+.65	-0.08

GRADING INFORMATION

Feeder Cattle

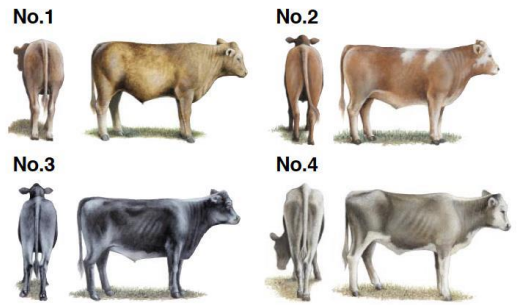
Official U.S. Grades

Frame Size



Large and medium frame pictures depict minimum grade requirements. The small frame picture represents an animal typical of the grade.

Thickness



No. 1, No. 2 and No. 3 thickness pictures depict minimum grade requirements. The No. 4 picture represents an animal typical of the grade.

Copies of the Official United States Standards for Feeder Cattle are available upon request

USDA United States Department of Agriculture | USDA Agricultural Marketing Service | Livestock and Sheep Program | Washington D.C. 20250 | October 2009

Large framed cattle are those that are expected to weigh over 1250lbs. when their external fat is approximately 0.5 inches. at the 12th rib where beef carcasses are “ribbed” for grading purposes. The 0.5-inch target is used in the USDA standards as a reasonable live animal predictor for a calf’s ability to grade choice or higher.

GRADE	STEER (LBS)	HEIFER (LBS)
LARGE (L)	1250 OR greater	1150 or greater
MEDIUM (M)	1100 TO 1249	1000 TO 1149

Stag Guarantee: Any steer found to be a stag within 90 days of the delivery date, buyer will be refunded \$250.

Heifer Guarantee: If a Buyer purchases a heifer that happens to be bred, the producer agrees to refund \$300 to the purchaser. This is subject to a veterinarian's certification that the heifer is pregnant and the returned ear tag verifying the identification and farm of origin.

Health Program:

All calves Double Vaccinated with Zoetis Animal Health products:
 Bovi-Shield Gold 5/One Shot (Modified Live) for IBR, PI3, BVD
 7-Way Clostridal (Ultrabac 7) and Dewormed

All Producers are BQA Certified

Contact: Jennifer Ligon (434) 607-5814 or Roger Morris (434) 315-4294

STEERS

<i>Lot 1</i>	<i>85 head Steers</i>	<i>Total Weight</i>	<i>48,000-50,000</i>
\$1.6050	<p>6 L1, 58 M1, 21 L&M2 80 Black, 3 BWF, 1 SMK, RED Average Weight: 585 lbs Range: 550-610 Flesh: 10% 4s and 90% 5s Clean few 1's Feed: 8 lbs grain, free choice hay and pasture Sires: Angus, Angus X Wt. Conditions: 30-mile haul to the BARN weighed and loaded FOB the BARN.</p>		**August 6 take up **
<i>Lot 2</i>	<i>80 head Steers</i>	<i>Total Weight</i>	<i>48,000-50,000</i>
\$1.64	<p>19 L1, 41 M1, 20 L&M2 46 Black, 31 BWF, 1 RWF, 2 Black-nose CX Average Weight: 620 Range: 550-750, 1@900 Flesh: 20% 4s, 70% 5s Clean, few 1s Feed: Ave. 8-10 lbs grain, free choice hay and pasture Sires: Angus, Angus X, few Balancer Crooked Creek Farms: Manager Rodney Womack 434-665-1929 Wt. Conditions: Loaded FOB farm, 12-mile haul to Rock Quarry, Charlotte. 2% Shrink</p>	<p>*1 Owner Load* *Naturals and GAP certified</p>	**No August 5,6,7 take-up**
<i>Lot 3</i>	<i>79 head Steers</i>	<i>Total Weight</i>	<i>48,000-50,000</i>
\$1.57	<p>7 L1, 56 M1, 16 L&M2 62 Black, 16 BWF, 1 Black-nose CX Average Weight: 625 Range: 550-700 Flesh: 10 % 4s and 90% 5s Clean, few 1s Feed: Ave. 10 lbs grain, free choice hay and pasture Sires: Angus, Angus X Brooklyn Road Farm: Manager Michael Randolph 434 547-3010 Sweet Springs Farm: Jim Pugh 434-610-7265 Wt. Conditions: 10 and 50-mile haul to the BARN weighed and loaded FOB the BARN.</p>	<p>*2 Owner Load*</p>	**August 5 take up **
<i>Lot 4</i>	<i>78 head Steers</i>	<i>Total Weight</i>	<i>48,000-50,000</i>
\$1.5350	<p>7 L1, 70 M1, 1 L&M2 72 Black, 5 BWF, 1 Black-nose CX Average Weight: 640 Range: 600-665 Flesh: 10% 4s, 90% 5s Clean few 1's Feed: Ave. 8-10 lbs 14% grain, free choice hay, pasture Sires: Angus, Angus X Wt. Conditions: 30-mile haul to the BARN weighed and loaded FOB the BARN.</p>		**August 6 take up **

Lot 5	74 head Steers	Total Weight	48,000-50,000
\$1.5150	<p>7 L1, 64 M1, 3 L&M2 *4 Owner load* 72 Black, 2 BWF Average Weight: 670 Range: 610-730 Flesh: 90% 5s, 10% 6s Clean few 1's Feed: Ave. 5-10 lbs grain, free choice hay and pasture Sires: Angus, Angus X, Balancer Berk Mar Farm, Creekview, Evergreen, High Bridge Contact: Brett Stratton of Evergreen Farm: 434 610-7625 Wt. Conditions: 40-mile haul to the BARN weighed and loaded FOB the BARN. **No August 5,6,7 take-up**</p>		
Lot 6	74 head Steers	Total Weight	48,000-50,000
\$1.56	<p>14 L1, 59 M1, 1 L&M 2 *1 Owner Load* 73 Black, 1 BWF Average Weight: 675 Range: 550-720, 1@800 Flesh: 20% 4s, 80% 5s Clean, few 1s Feed: Ave. 8 lbs grain, free choice hay and pasture Sires: Angus, Angus X, Balancer Randy Wilmoth of Wilmoth Farms: 434 989-1381 Wt. Conditions: Loaded FOB the farm, 17-mile haul to Mead-Westvaco Scales North of Dillwyn. 2% Shrink. ** No Aug. 5,6,7 take up**</p>		
Lot 7	71 head Steers	Total Weight	49,000-50,800
\$1.48	<p>9L1, 61 M1, 1 L&M2 66 Black, 2 BWF, 3 Black-nose CX Average Weight: 695 Range: 650-750 Flesh: 100% 5s Clean, few 1s Feed: 8-10 lbs grain, free choice hay and pasture Sires: Angus, Angus X Wt. Conditions: 30-mile haul to the BARN weighed and loaded FOB the BARN. ** August 6 take up **</p>		
Lot 8	69 head Steers	Total Weight	48,000-50,000
\$1.4450	<p>29 L1, 39 M1, 1 L&M2 66 Black, 3 BWF Average Weight: 715 Range: 675-770 Flesh: 100% 5s Clean few 1's Feed: Ave 8-10lbs grain, free choice hay Sires: Angus, Gelbvieh X, Balancer Wt. Conditions: 20/40-mile haul to the BARN weighed and loaded FOB the BARN. **August 5 take up**</p>		

Lot 9	67 head Steers	Total Weight	48,000-50,000
\$1.49	<p>7 L1, 60 M1 *1 Owner Load* 65 Black, 1 BWF, 1 Black-nose CX Average Weight: 735 Range: 675-790 Flesh: 10% 4s, 90% 5s Clean: 1S, few 0s Feed: 5 lbs grain, free choice hay and pasture Lin Jones of Berk Mar Farm: 434 581-3997, 434 981-5424 Wt. Conditions: Loaded FOB the farm, 12-mile haul to Mead-Westvaco Scales North of Dillwyn. 2% Shrink. **NO August 5,6,7 take up**</p>		
Lot 10	65 head Steers	Total Weight	48,000-50,000
\$1.52	<p>6L1, 59 M1 *1 Owner Load* 43 Black, 20 BWF, 2 RED Average Weight: 765 Range: 710-800 Flesh: 80% 5s, 20% 6s Clean Feed: 10 lbs grain, free choice *Naturals hay and pasture Sires: Angus, Angus X, Gelbvieh, Balancer Brett Stratton of Evergreen Farms: 434-610-7625 Wt. Conditions: 25-mile haul Lynchburg Livestock Market weighed and loaded FOB the market. **Schedule Take up**</p>		
Lot 11	63 head Steers	Total Weight	48,000-50,000
\$1.41	<p>6L1, 57 M1 *1 Owner Load* 63 Black Average Weight: 780 Range: 735-840 Flesh: 90% 5s, 10% 6s Clean Feed: 10 lbs grain, free choice hay and pasture Sires: Angus, Balancer Robert Womack of Woodville Farm: 434 547-9611 Wt. Conditions: Loaded FOB the Farm 10-mile haul to Taylor Motor Scales, Cumberland 2% Shrink **NO August 5,6,7 take up**</p>		
Lot 12	61 head Steers	Total Weight	48,000-50,000
\$1.38	<p>16 L1, 44 M1, 1 L&M2 58 Black, 3 BWF Average Weight: 805 Range: 740-860, 3@950 Flesh: 100% 5s Clean Feed: Ave. 8-10 lbs grain, free choice hay and pasture Sire: Angus, Angus X Wt. Conditions: 20/40-mile haul to the BARN weighed and loaded FOB the BARN. **August 5 take up**</p>		

Lot 13	61 head Steers	Total Weight	48,000-50,000
\$1.4950	<p>5L1, 56 M1 *1 Owner Load*</p> <p>51 Black, 9 BWF, 1 black-nose CX</p> <p>Average Weight: 810 Range: 720-890</p> <p>Flesh: 80% 5s, 20% 6s Clean *Naturals*</p> <p>Feed: 8 lbs grain, free choice hay and pasture</p> <p>Sires: Angus X, Balancer, Gelbvieh</p> <p>Bob Martin of Creek View Farms: 434-610-0411</p> <p>Wt. Conditions: 30-mile haul Lynchburg Livestock Market</p> <p>weighed and loaded FOB the market. **Schedule Take up**</p>		
Lot 14	61 head Steers	Total Weight	48,000-50,000
\$1.39	<p>16 L1, 40 M1, 2 L&M2 *1 Owner Load*</p> <p>47 Black, 11 BWF</p> <p>Average Weight: 810 Range: 725-880, 2@925</p> <p>Flesh: 100% 5s Clean, few 1s</p> <p>Feed: 12 lbs grain, free choice hay and pasture</p> <p>Sires: Angus, Angus X *Some pink eye spots</p> <p>Brooklyn Road Farm: Manager Michael Randolph 434 547-3010</p> <p>Wt. Conditions: Loaded FOB farm, 5-mile haul to Mead-Westvaco Scales</p> <p>North of Dillwyn. 2% Shrink. **NO August 5,6,7 take up**</p>		
Lot 15	60 head Steers	Total Weight	48,000-50,000
\$1.3650	<p>11 L1, 49 M1 *2 Owner Load</p> <p>58 Black, 2 BWF</p> <p>Average Weight: 825 Range: 765-880, 4@940</p> <p>Flesh: 100% 5s Clean, few 1s</p> <p>Feed: 5-10 lbs grain, free choice hay and pasture</p> <p>Sires: Angus, Balancer</p> <p>Berk Mar Farm and High Bridge Farm</p> <p>Contact: Lin Jones of Berk Mar Farm: 434 581-3997, 434 981-5424</p> <p>Wt. Conditions: 40-mile haul to the BARN</p> <p>weighed and loaded FOB the BARN. **Schedule Take up**</p>		
Lot 16	58 head Steers	Total Weight	31,000-33,000
\$1.3250	<p>31 L1, 27 M1</p> <p>51 Black, 4 BWF, 3 Black-nose CX</p> <p>Average Weight: 855 Range: 795-900, 1@990</p> <p>Flesh: 100% 5s Clean few 1's</p> <p>Feed: Ave. 8-10 lbs grain, free choice hay and pasture</p> <p>Sires: Angus, Gelbvieh</p> <p>Wt. Conditions: 20/40-mile haul to the BARN weighed and loaded FOB the BARN. **August 5 take up**</p>		

Lot 17	58 head Steers	Total Weight	48,000-50,000
\$1.43	<p>14 L1, 44 M1 38 Black, 19 BWF, 1 RED Average Weight: 850 Flesh: 80% 5s, 20%6s Feed: 10 lbs grain, free choice hay and pasture Sires: Angus, Balancer Brett Stratton of Evergreen Farms: 434-610-7625 Wt. Conditions: 25-mile haul Lynchburg Livestock Market weighed and loaded FOB the market.</p>	<p>Range: 800-915 Clean, few 1s</p>	<p>*1 Owner Load *Naturals **Schedule Take up**</p>
Lot 18	54 head Steers	Total Weight	26,000-28,000
\$1.54	<p>4 L1, 29 M1, 21 L&M 2s 53 Black, 1 Black-nose CX Average Weight: 515 Flesh: 100% 5s Feed: Ave. 8-10 lbs grain, free choice hay and pasture Sires: Angus, Angus X, Gelbvieh Wt. Conditions: 20/40-mile haul to the BARN weighed and loaded FOB the BARN. up**</p>	<p>Range: 450-545 Clean few 1's</p>	<p>**August 6 take</p>
HEIFERS			
Lot 19	88 head Heifers	Total Weight	26,000-28,000
\$1.37	<p>6 L1, 53 M1, 29 L&M2 69 Black, 19 BWF Average Weight: 560 Flesh: 70% 4s, 30% 5s Feed: Ave. 8 lbs grain, free choice hay and pasture Sires: Angus, Angus X Grind-N-Stone (Clark Poindexter 434-660-7530) and Crooked Creek Farms: Manager Rodney Womack 434-665-1929 Wt. Conditions: Loaded FOB farm, 12-20 mile haul to Rock Quarry, Charlotte. 2% Shrink</p>	<p>Range: 475-620 Clean few 1's</p>	<p>*2 Owner Load* ** Naturals **No August 5,6,7 take-up**</p>

Lot 20	85 head Heifers	Total Weight	48,000-50,000
\$1.37	<p>6 L1, 60 M1, 19 L&M2 80 Black, 5 BWF Average Weight: 585 Flesh: 10% 4s, 90% 5s Feed: Ave. 5-10 lbs grain, free choice hay and pasture Sires: Angus, Angus X Wt. Conditions: 40/60-mile haul to the BARN weighed and loaded FOB the BARN.</p>	<p>Range: 560-610 Clean few 1's</p>	** August 7 take up**
Lot 21	77 head Heifers	Total Weight	48,000-50,000
\$1.3750	<p>3 L1, 33 M1, 33 L&M2 61 Black, 13 BWF, 3 RWF Average Weight: 635 Flesh: 100% 5s Feed: Ave 8-10lbs grain, free choice hay and pasture Sires: Angus, Angus X, Balancer Brooklyn Road Farm: Manager Michael Randolph 434 547-3010 Wt. Conditions: Loaded FOB farm, 5-mile haul to Mead-Westvaco Scales North of Dillwyn. 2% Shrink.</p>	<p>**1 Owner Load** Range: 500-700, 1@790 Clean few 1s</p>	**NO August 5,6,7 take up**
Lot 22	78 head Heifers	Total Weight	48,000-50,000
\$1.3850	<p>5 L1, 65 M1, 8 L&M2 68 Black, 9 BWF, 1 Black nosed CX Average Weight: 635 Flesh: 100% 5s Feed: Ave. 5-12 lbs grain, free choice hay and pasture Sires: Angus, Balancer, Gelbvieh Wt. Conditions: 20/40-mile haul to the BARN weighed and loaded FOB the BARN.</p>	<p>Range: 590-660 Clean few 1s</p>	**August 7 take up**
Lot 23	78 head Heifers	Total Weight	48,000-50,000
\$1.42	<p>12L1, 61 M1, 5 L&M2 76 Black, 1 BWF, 1 black nose CX Average Weight: 640 Flesh: 100% 5s Feed: Ave. 5-10 lbs grain, free choice hay and pasture Sires: Angus, Balancer</p>	<p>**Replacement Quality** *1 Owner Load* Range: 550-720, 1@870 Clean</p>	*Naturals One Freemartin
	<p>Berk Mar Farm Contact: Lin Jones of Berk Mar Farm: 434 581-3997, 434 981-5424. Wt. Conditions: Loaded FOB the farm, 12-mile haul to Mead-Westvaco Scales, 2% Shrink.</p>		**NO August 5,6,7 take up**

Lot 24	72 head Heifers	Total Weight	48,000-50,000
\$1.3650	3 L1, 68 M1, 3 L&M2 62 Black, 10 BWF Average Weight: 680 Flesh: 80% 5s, 20% 6s Feed: Ave. 10 lbs grain, free choice hay and pasture Sires: Angus, Balancer	**Replacement Quality** Range: 615-750 Clean few 1s	*2 Owner Load *Naturals
	Evergreen Farms and Creek View Farms: Contact: Brett Stratton 434-610-7625. Wt. Conditions: 25-mile haul Lynchburg Livestock Market weighed and loaded FOB the market.		**Schedule Take up**
Lot 25	71 head Heifers	Total Weight	48,000-50,000
\$1.2750	13 L1, 55 M1, 3 L&M 2s 68 Black, 3 BWF Average Weight: 695 Flesh: 90% 5s, 10% 6s Feed: Ave. 5-8 lbs grain, free choice hay and pasture Sires: Angus, Gelbvieh, Balancer	**Replacement Quality** Range: 665-780, 1 @ 820 Clean	1 Freemartin
	Wt. Conditions: 20/40-mile haul to the BARN weighed and loaded FOB the BARN.		**August 7 take up**
Lot 26	70 head Heifers	Total Weight	48,000-50,000
\$1.30	15 L1, 48 M1 70 Black Average Weight: 705 Flesh: 100% 5s Feed: Ave. 8-10 lbs grain, free choice hay and pasture Sire: Angus, Balancer	Range: 615-770, 1 @ 830 Clean	*1 owner load*
	Robert Womack of Woodville Farm : 434 547-9611 Wt. Conditions: Loaded FOB the Farm 10-mile haul to Taylor Motor Scales, Cumberland 2% Shrink		**NO August 5,6,7 take up**
Lot 27	67 head Heifers	Total Weight	20,000-22,000
\$1.36	1 L1, 33 M1, 33 L&M2 65 Black, 2 BWF Average Weight: 510 Flesh: 20% 4s, 80% 5s Feed: Ave. 5-12 lbs grain, free choice hay and pasture Sires: Angus, Balancer, Gelbvieh	Range: 450-550 Clean few 1s	*Half load
	Wt. Conditions: 20/40-mile haul to the BARN weighed and loaded FOB the BARN.		**August 7 take up**